

Support File

FAQ NO.	0011	Updated:	2011/02/01
Model applied:	NDF820, NDF821, NDF831, NCR870, NDR891		
Problem description:	How to update firmware of NDF8XX/NCR870/NDR891 cameras?		
Remark:	Browser: IE6, IE7, IE8		

How to update firmware of NDF8XX/NCR870/NDR891 cameras?

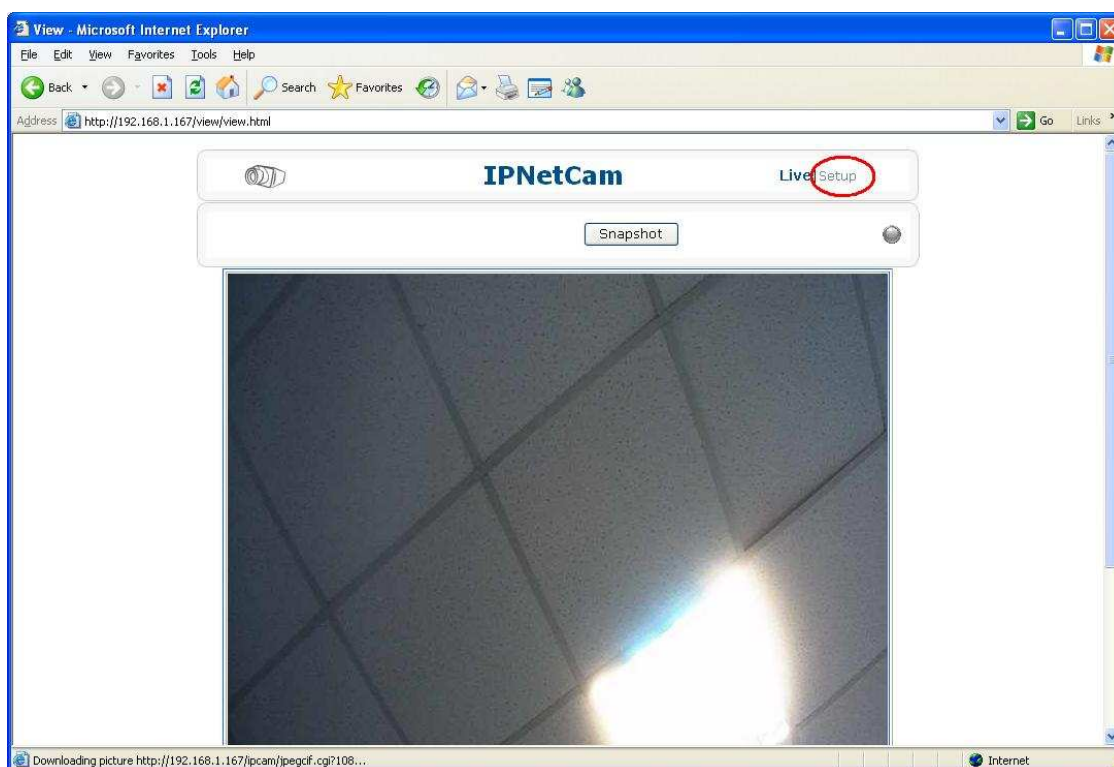
Notice:

- (1) Do not disconnect or power off the camera during the update or the camera may become inoperable due to incomplete update processes.
- (2) Please close any operating program, including IP finder, Microsoft Office, internet browsers etc, to make sure the update process will not be interrupted.

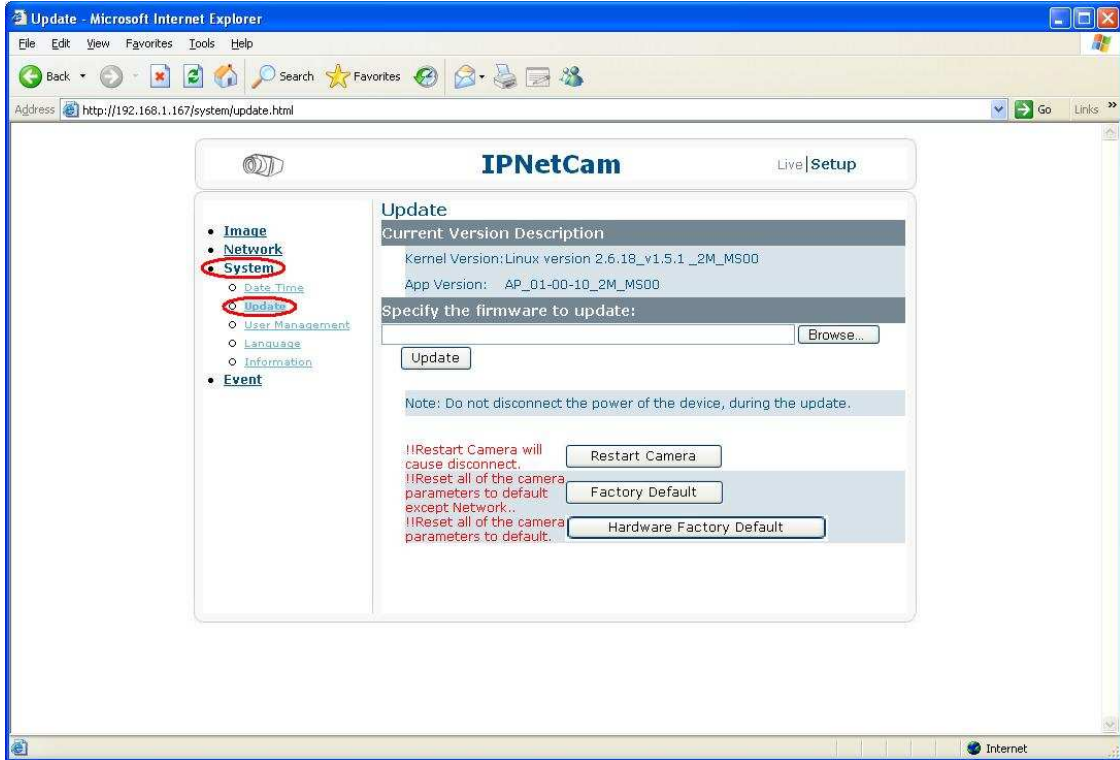
Step1 : Connect to the camera's IP address that you have set. (The default IP address is

<http://192.168.1.30>)

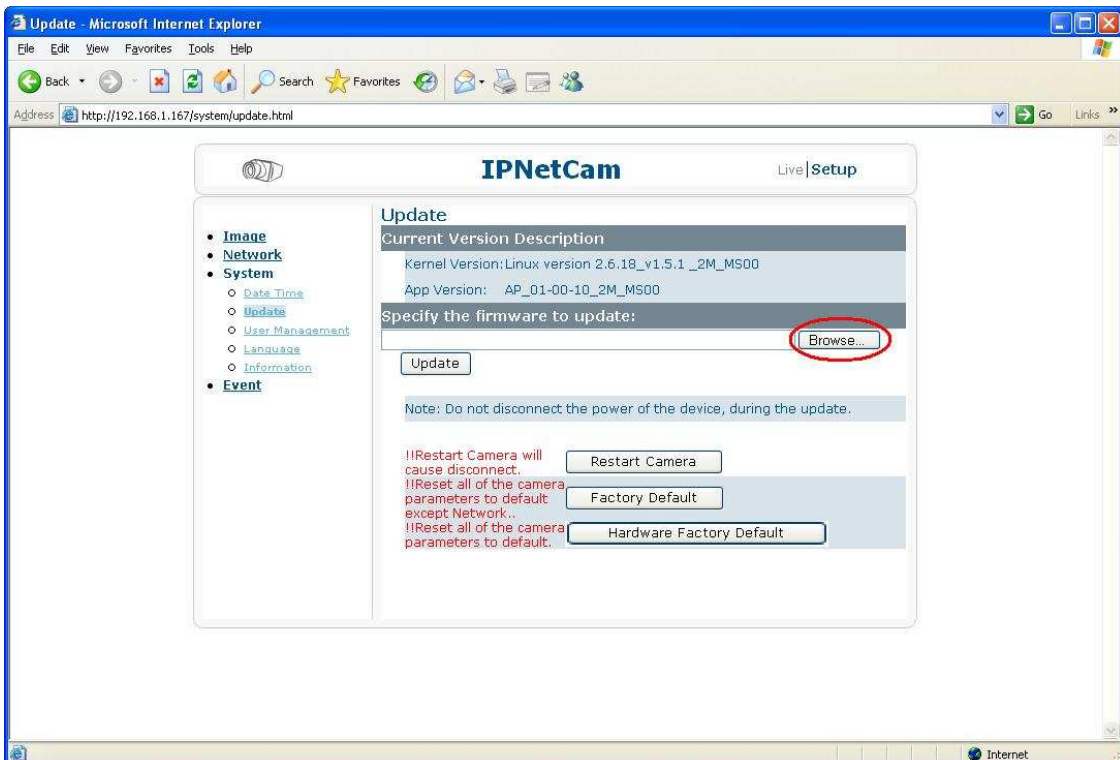
Step2 : On the web page, click "Setup" to go to the setup page for firmware update.



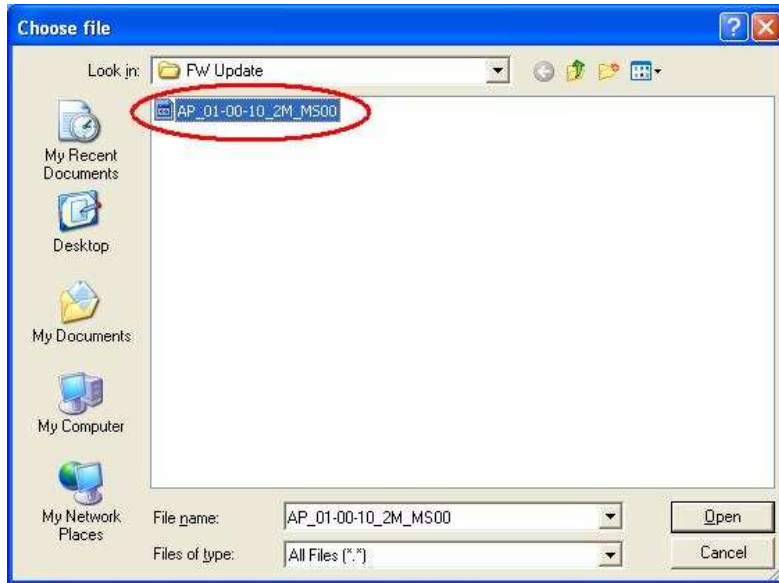
Step3 : Click "System" → "Update".



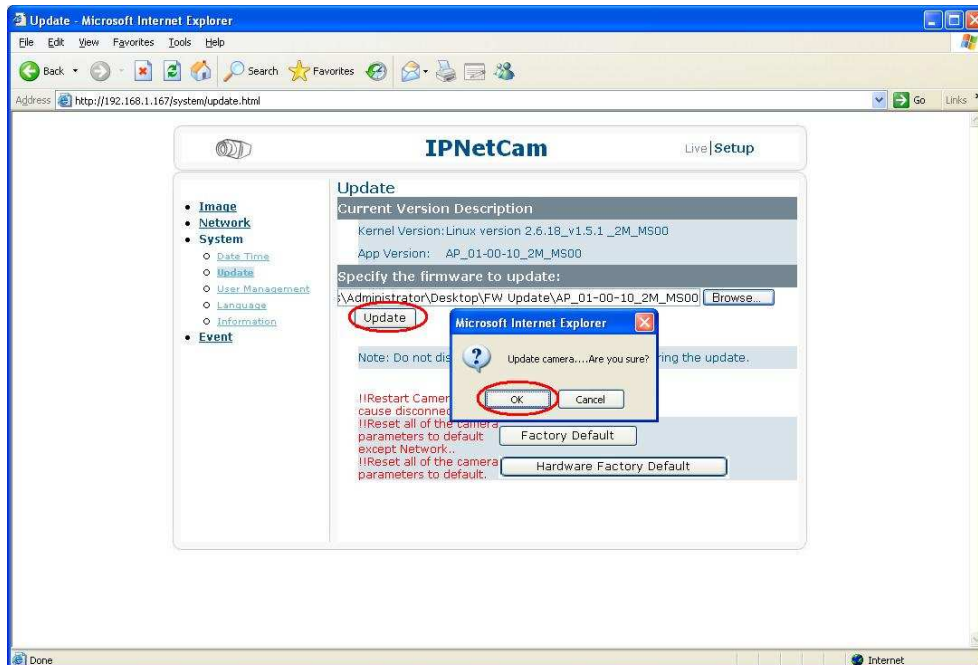
Step4: Click "Browse" to search the folder where the firmware is located.



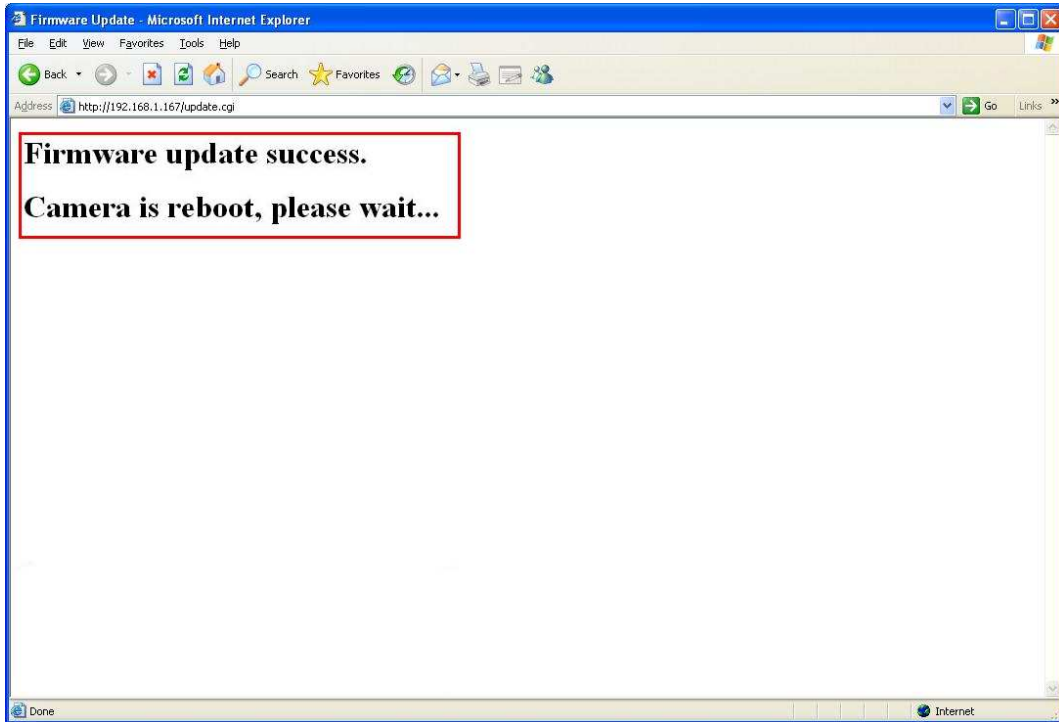
Step5 : Click the kernel firmware and open



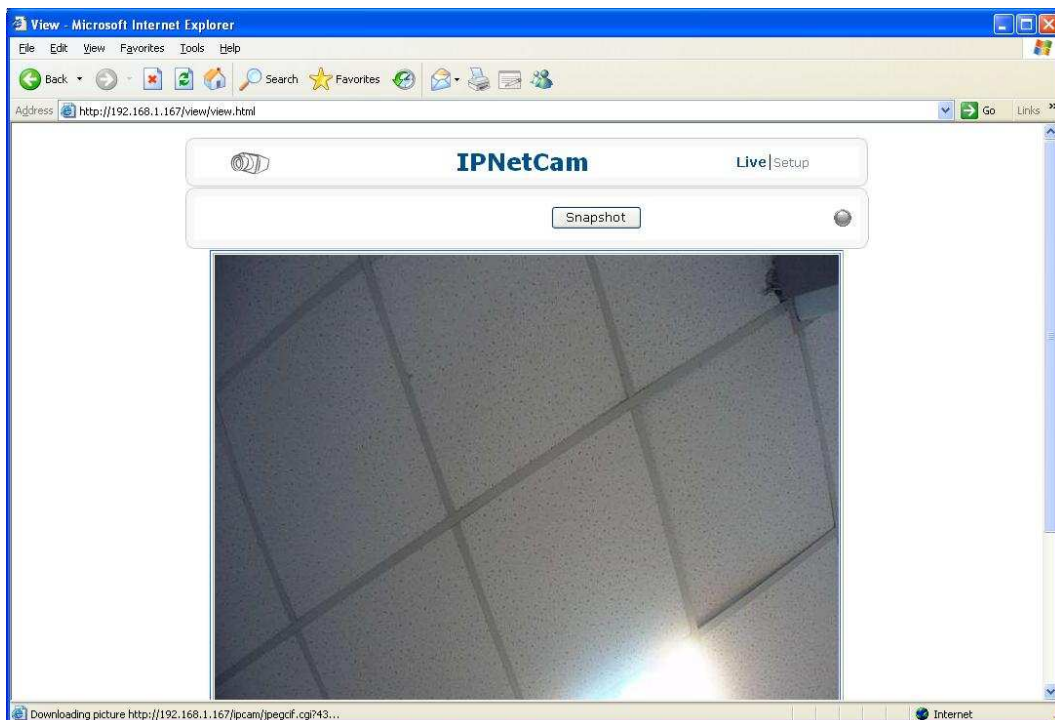
Step6 : Click "Update" and "OK". Wait about 30 seconds until the file is successfully updated.



Step7 : After the firmware is successfully updated, you will see the successful message.



Step8: After 1 minute, WEB will re-direct to Live view page.



Step9: If you successfully update the new firmware file, you will see the new "App Version" in the Current Version Description section.

