


**Notice:**

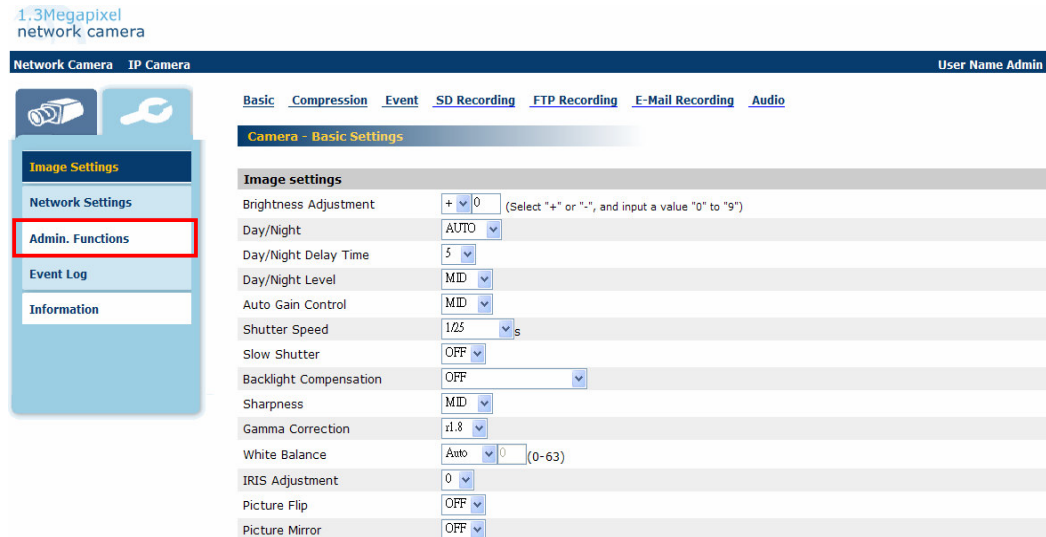
**Inappropriate firmware update may cause serious problems to your cameras.**

**Please follow correct procedures to update firmware as below. Do not disconnect the connection and power off camera during update!**

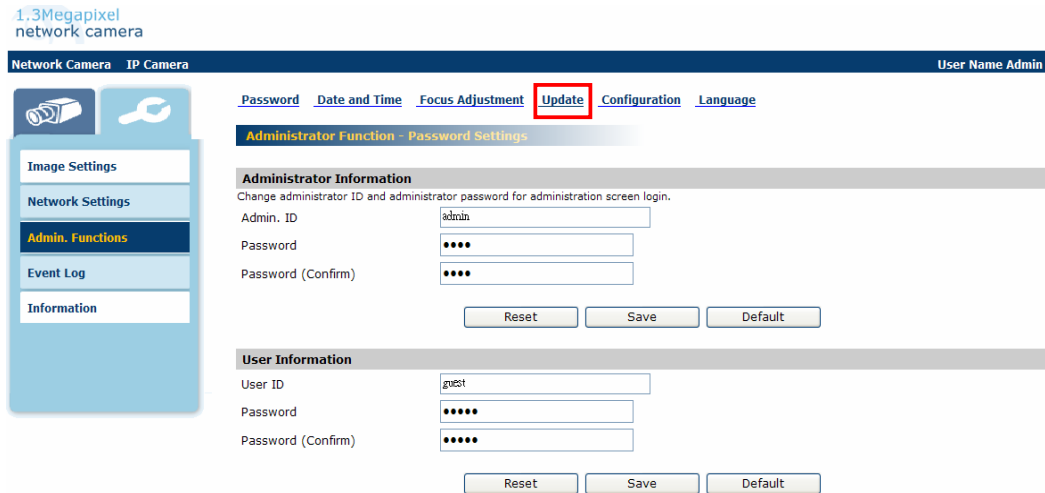
1. (a.) Connect to the camera.( the default ip address is http://192.168.0.30.)  
(b.)Click the  icon.



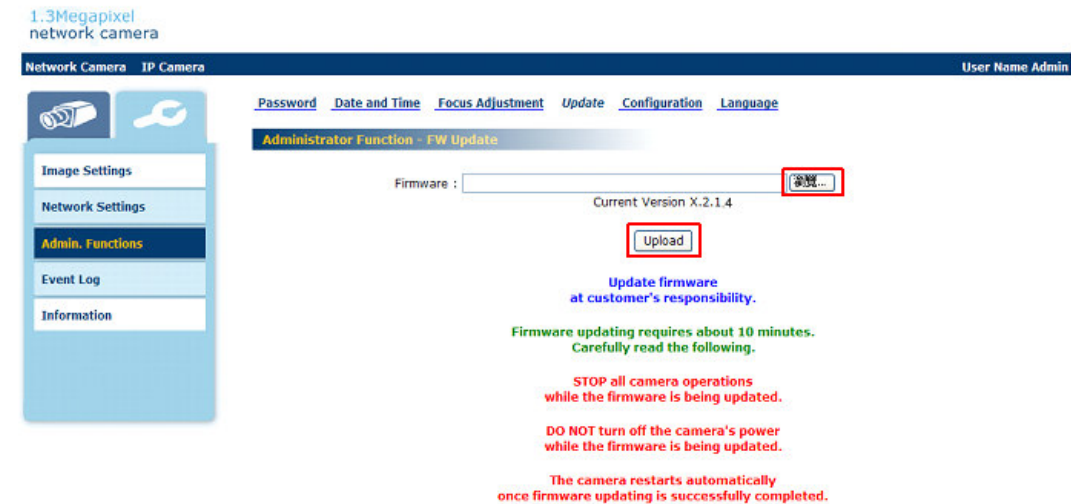
2. (a.) Click “Admin. Functions”.



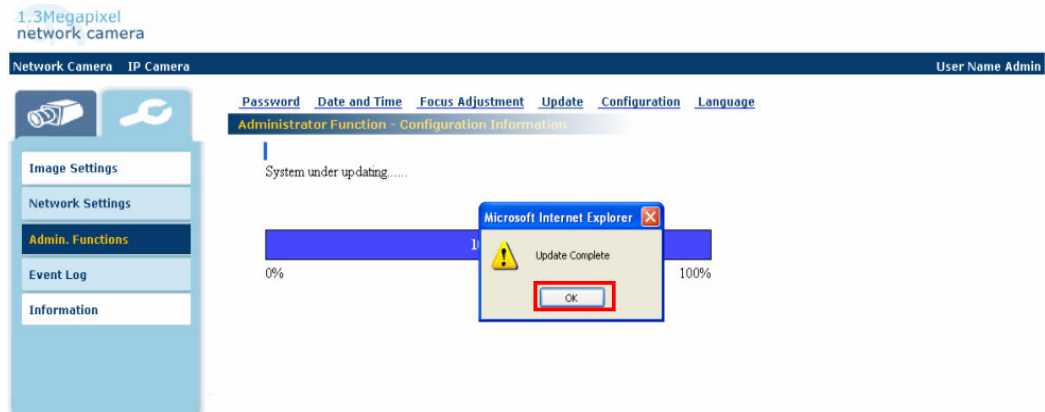
. (b.) Click "Update".



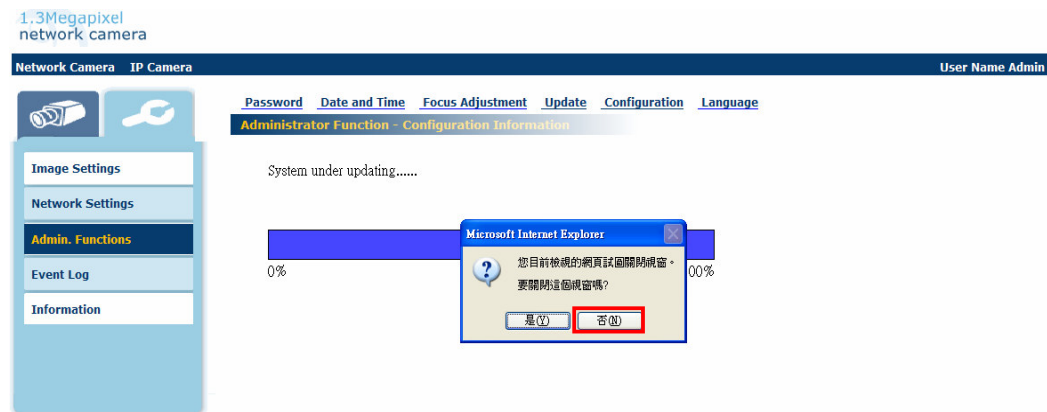
3. (a) Click the "Browse" button and choose the new firmware file you have downloaded.  
(b) Click "Upload".



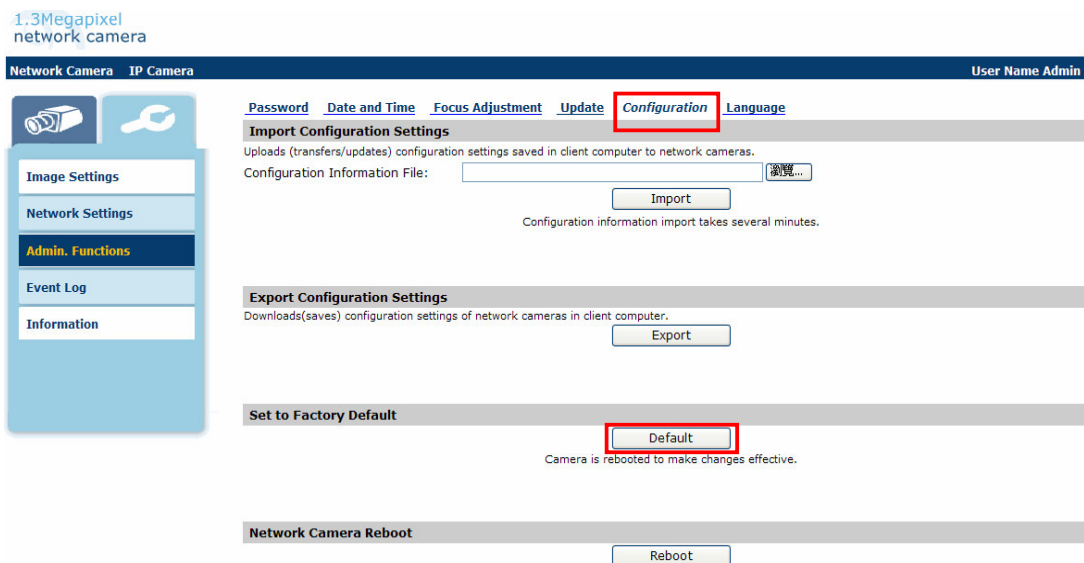
4. After 10 minutes, the IE will display a successful message as below and then click the "OK" button.



5. Then, a message pops out. Click "NO".



6. (a.) Click "Configuration" and press the "Default" button to return all parameters to factory default, except camera IP address. We recommend resetting the camera to factory default after updating the firmware.



(b.) Then a confirmation message pops out. Click "OK" to confirm all settings back to factory default.

1.3Megapixel network camera

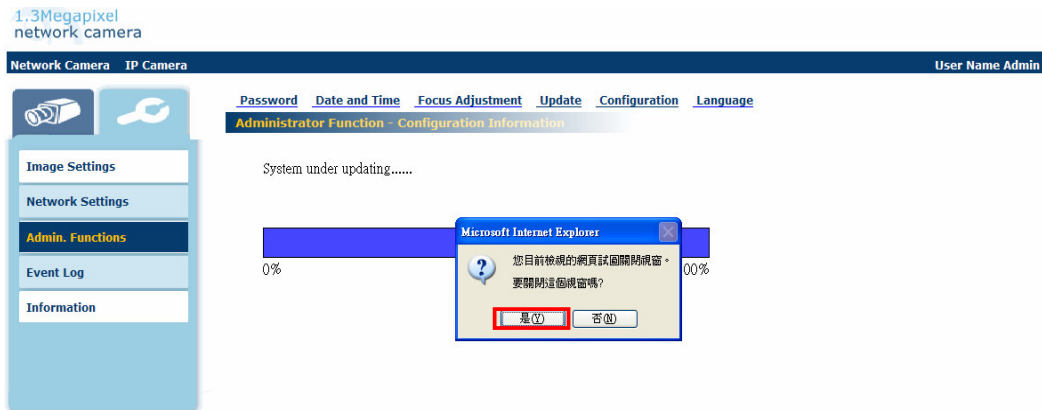
The screenshot shows the web interface for a 1.3 Megapixel network camera. The top navigation bar includes 'Network Camera', 'IP Camera', and 'User Name Admin'. The left sidebar contains menu items: 'Image Settings', 'Network Settings', 'Admin. Functions' (highlighted), 'Event Log', and 'Information'. The main content area has tabs for 'Password', 'Date and Time', 'Focus Adjustment', 'Update', 'Configuration', and 'Language'. Under the 'Configuration' tab, there are sections for 'Import Configuration Settings', 'Export Configuration', 'Set to Factory Default', and 'Network Camera Reboot'. A 'Microsoft Internet Explorer' dialog box is overlaid on the 'Default' button, with the text: 'This will reset All of settings to factory default values and reboot the camera. Do you want to continue? Type in the address in the browser after camera rebooting is completed.' The dialog has '确定' (OK) and '取消' (Cancel) buttons, with '确定' highlighted by a red box.

(c.) When firmware update is completed, a update completed message comes out and then press "OK".

1.3Megapixel network camera

The screenshot shows the web interface for a 1.3 Megapixel network camera. The top navigation bar includes 'Network Camera', 'IP Camera', and 'User Name Admin'. The left sidebar contains menu items: 'Image Settings', 'Network Settings', 'Admin. Functions' (highlighted), 'Event Log', and 'Information'. The main content area has tabs for 'Password', 'Date and Time', 'Focus Adjustment', 'Update', 'Configuration', and 'Language'. Under the 'Update' tab, there is a section titled 'Administrator Function - Configuration Information' with the text 'System under updating.....'. Below this is a progress bar showing 0% to 100%. A 'Microsoft Internet Explorer' dialog box is overlaid on the progress bar, with the text: 'Update Complete'. The dialog has a '确定' (OK) button highlighted by a red box.

(d.) Click "OK" to close the IE browser.



7. After successful update, reconnect to the camera, click "Information" to see the version of firmware which you updated (The FW Version X.2.1.6 is just an example. This is not the latest firmware).

