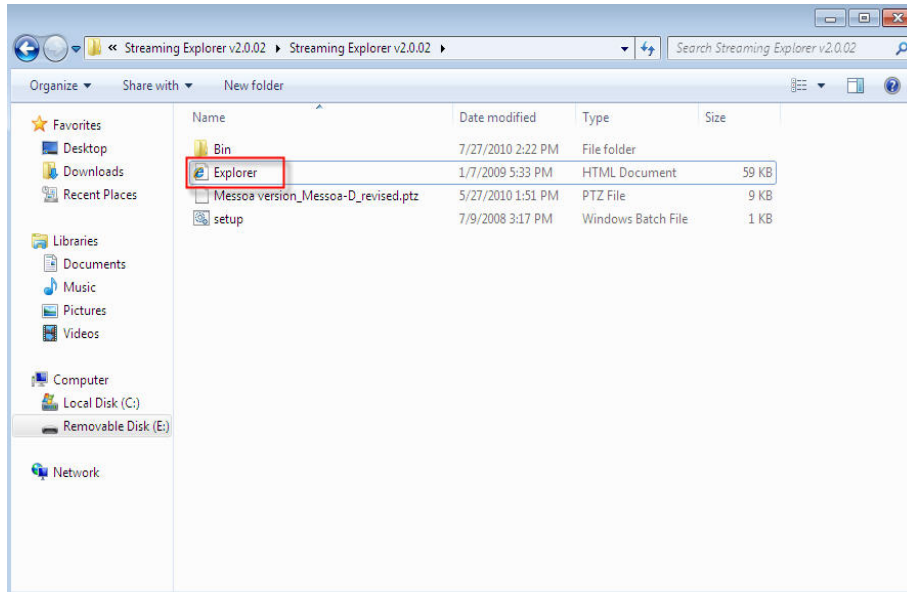
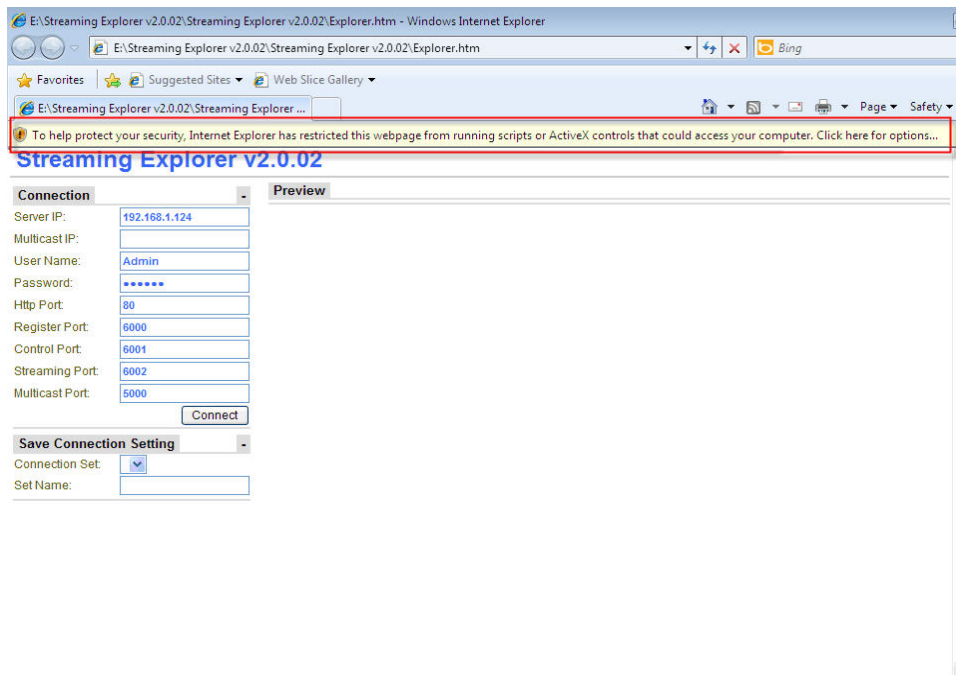


# How to Use Streaming Explorer

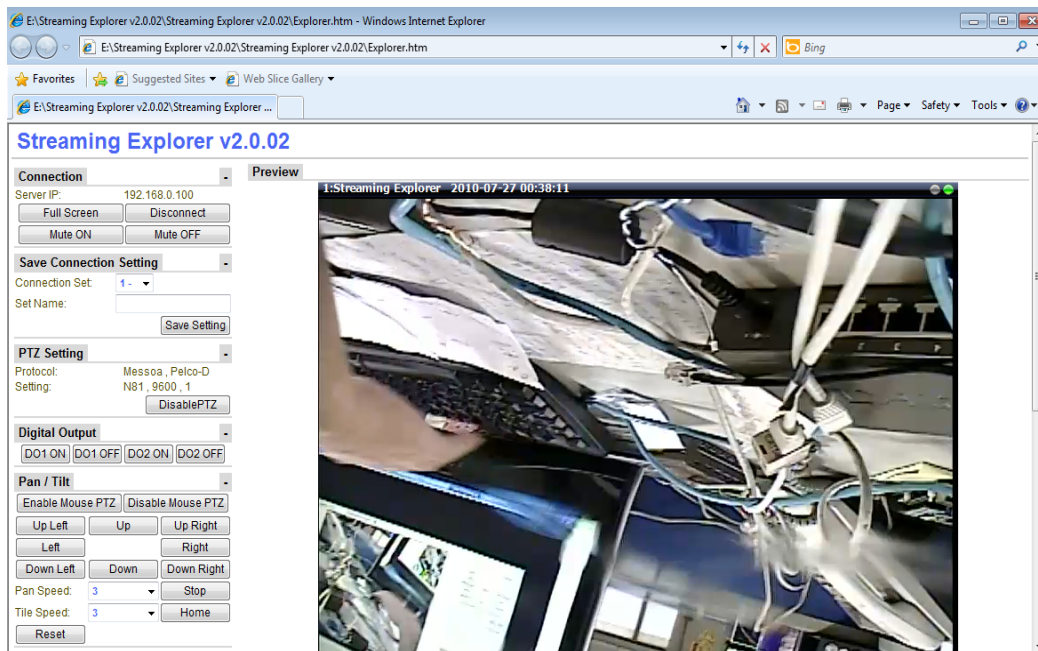
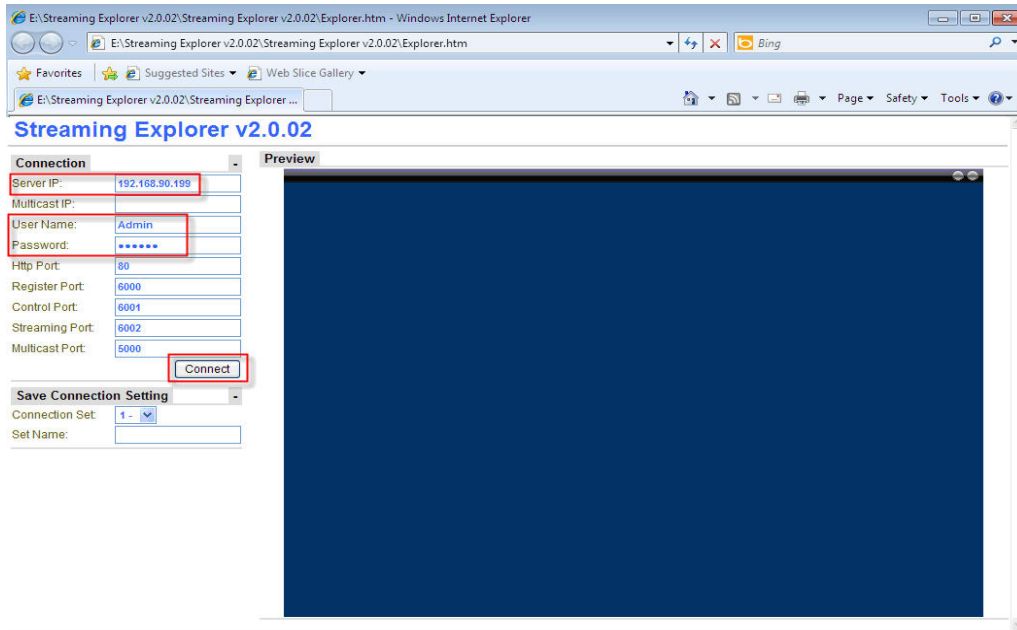
**Step1.** Double Click "Explorer.htm"



**Step2.** An Active X prompt will appear in your browser. Click it to install.



**Step3.** Input the device's IP Address,user name/Password. Then click "Connect".



**Step4.**Go to "PTZ setting".

**"Vendor"** - Select "Messoa"

**"Protocol"** – Select "Pelco-D"

**"Protocol File"** – Click on the box. A window will popup. Click the "Messoa version \_Messoa-D\_revised.ptz" file. ✖(This file has been placed in the "Streaming Explorer

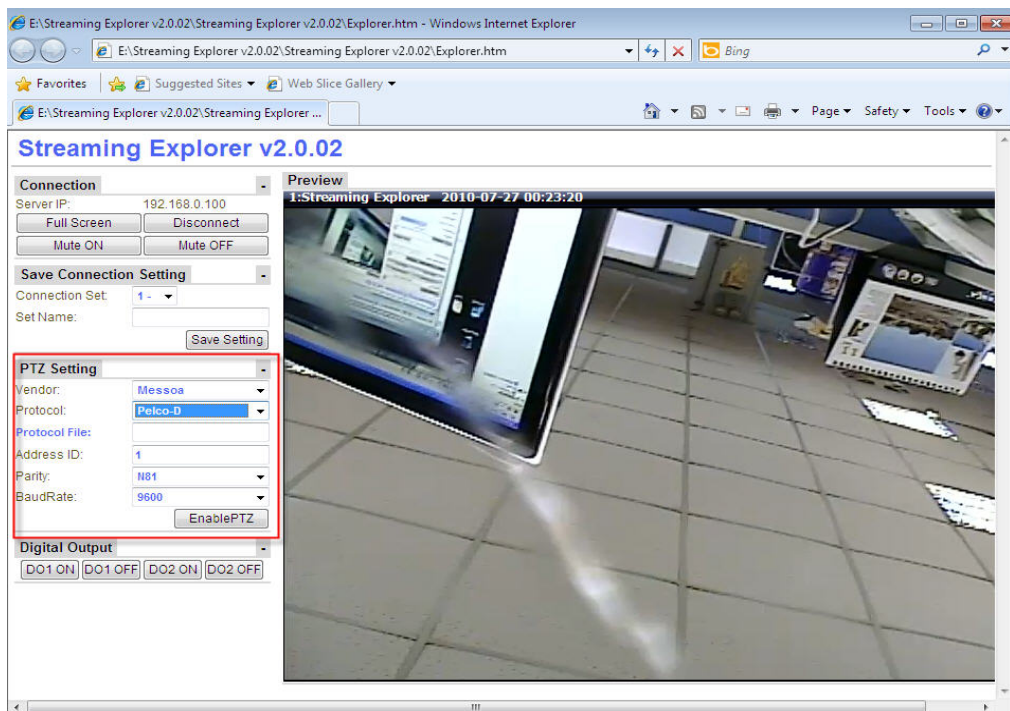
v2.0.02" folder)

“Address ID” - The default setting is “1”.

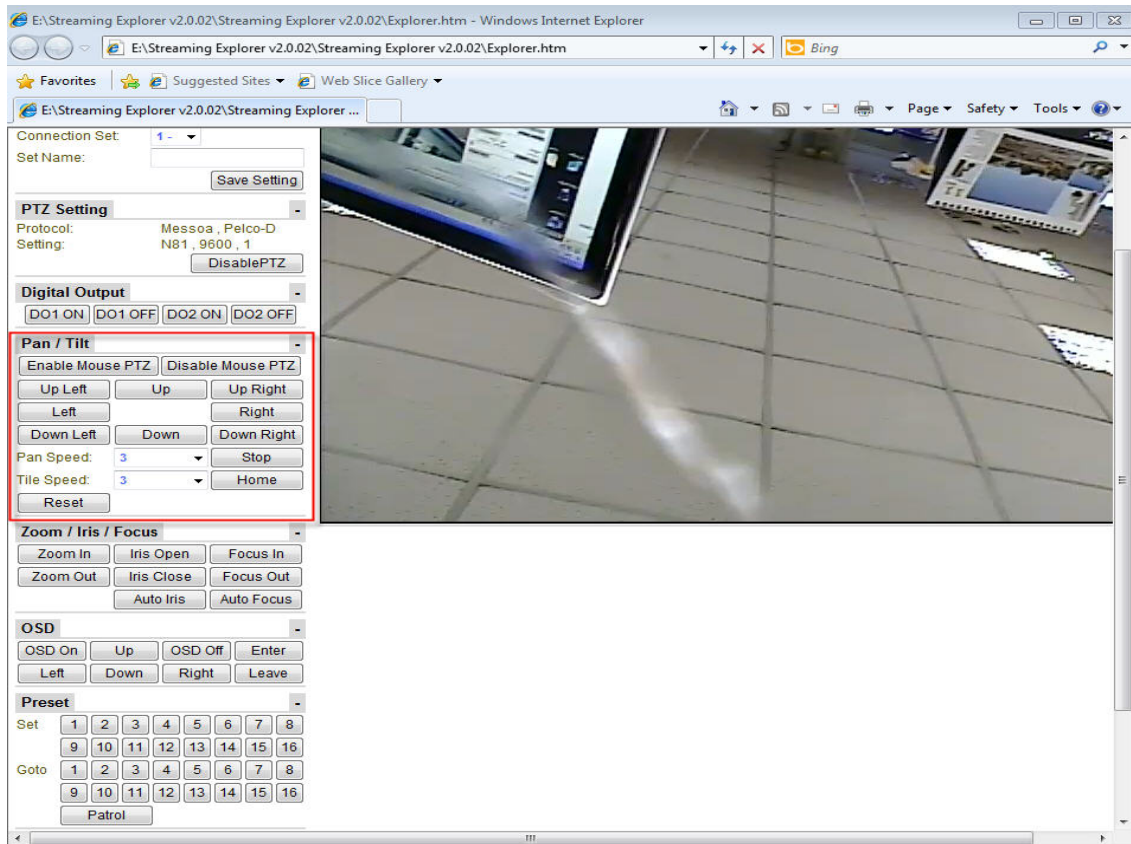
“Parity” - Select “N81”.

“BaudRate” – Choose “9600”.

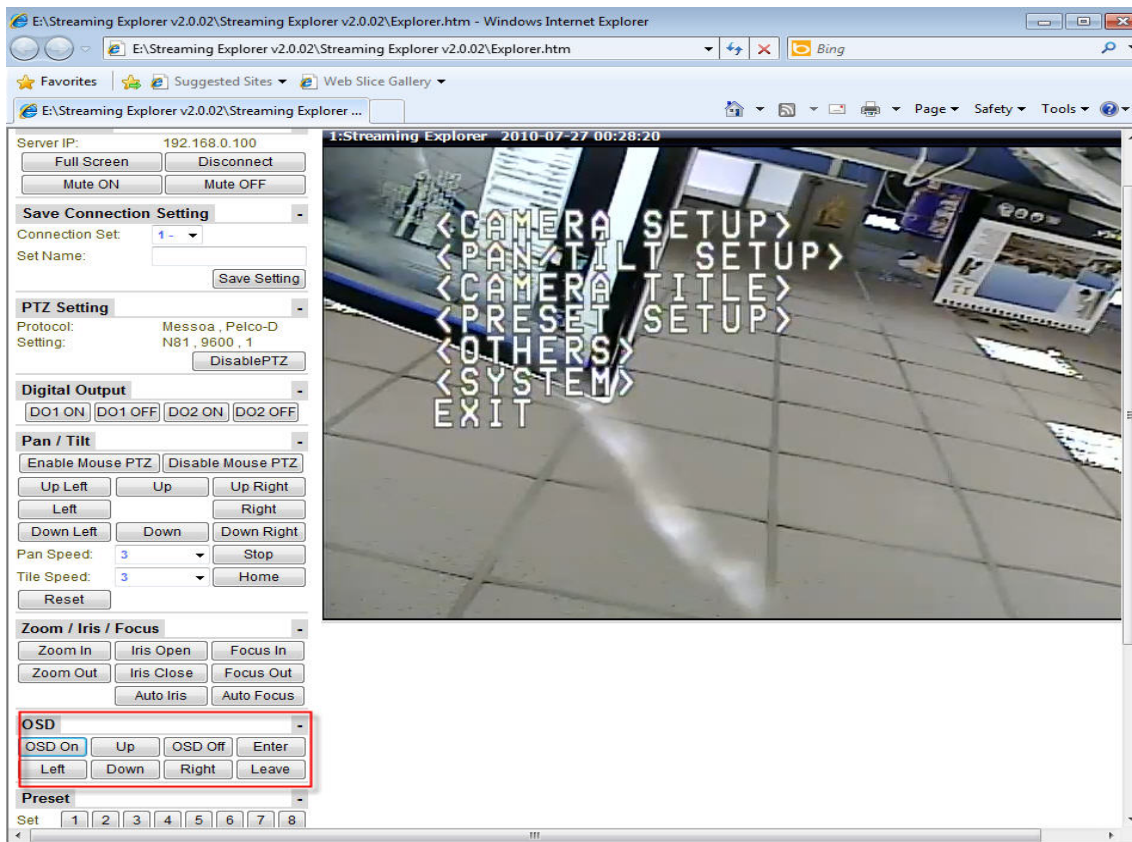
“EnablePTZ” – Click to enable PTZ function.



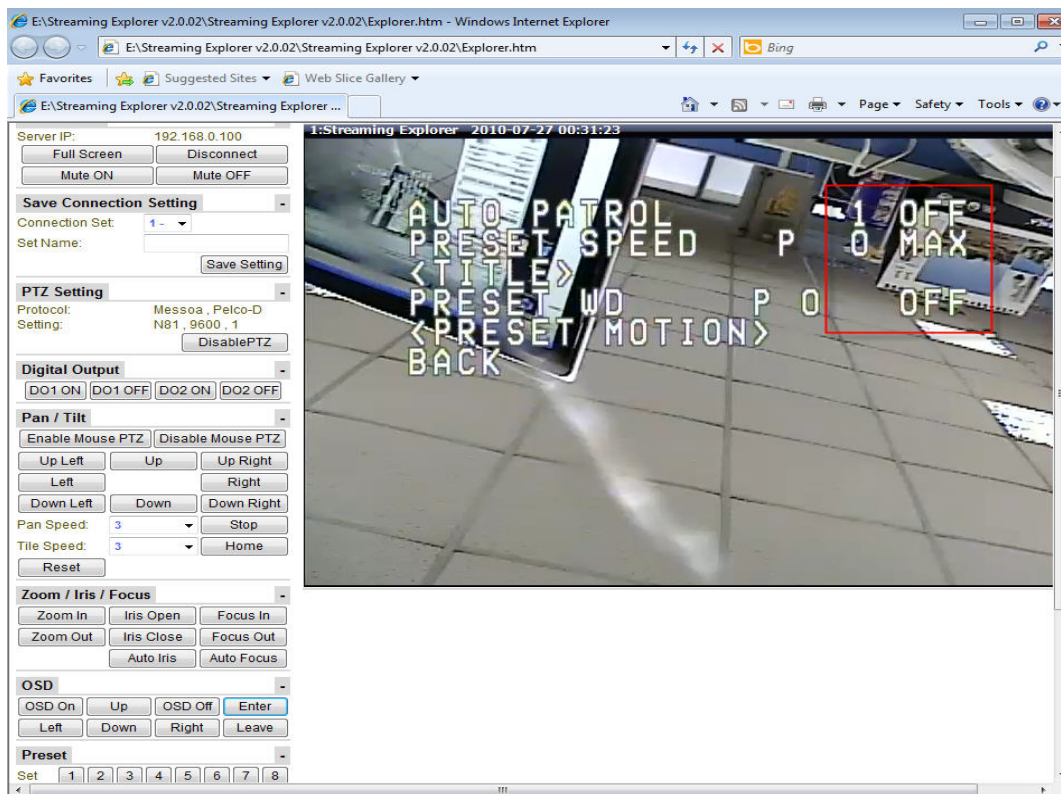
**Step4.Pan/Tilt** - Control the camera using the directional buttons. Click “Enable Mouse PTZ” to control the camera with your mouse.



**Step5.** Click “OSD on” button to open the OSD function (Diagram 1). Use the directional buttons to select items. Press the “Enter” key to enter any Sub-menus (Diagram 2). Use the up and down buttons to select the options. Press “Enter”. Use the left and right buttons to select the function and the up and down button to change their setting.

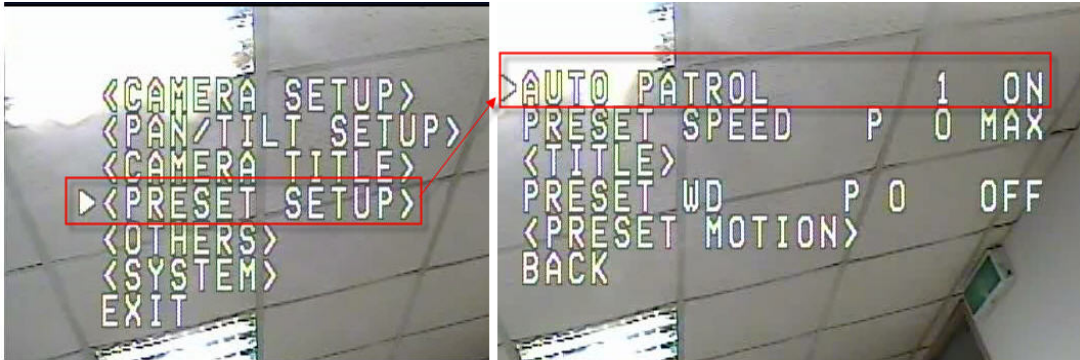


(Diagram 1)



(Diagram 2)

**Step6.** Open the OSD menu. Select the “Preset Setup” option. Then select “Auto Patrol” (Diagram 3). Set the preset buttons to “On” . Set the preset positions by moving the camera to the desired position then pressing a “Set” number. Up to 16 preset positions can be set. Press the “Goto” numbers to instantly go to the preset position. The “Patrol” button cycles through all preset positions.



(Diagram 3)

### Streaming Explorer v2.0.02

**Connection**
**Preview**

Server IP: 192.168.90.199

Full Screen
Disconnect

Mute ON
Mute OFF

---

**Save Connection Setting**

Connection Set: 1 -

Set Name:

Save Setting

---

**PTZ Setting**

Protocol: Messoa , Pelco-D  
 Setting: N81 , 9600 , 1

DisablePTZ

---

**Digital Output**

DO1 ON
DO1 OFF
DO2 ON
DO2 OFF

---

**Pan / Tilt**

Enable Mouse PTZ
Disable Mouse PTZ

Up Left
Up
Up Right

Left
Right

Down Left
Down
Down Right

Pan Speed: 3 Stop

Tilt Speed: 3 Home

Reset

---

**Zoom / Iris / Focus**

Zoom In
Iris Open
Focus In

Zoom Out
Iris Close
Focus Out

Auto Iris
Auto Focus

---

**OSD**

OSD On
Up
OSD Off
Enter

Left
Down
Right
Leave

---

**Preset**

Set	1	2	3	4	5	6	7	8
	9	10	11	12	13	14	15	16
Goto	1	2	3	4	5	6	7	8
	9	10	11	12	13	14	15	16
	Patrol							