

# WinLoad™

SECURITY SYSTEM MANAGEMENT SOFTWARE FOR WINDOWS®



## **Quick Start** Instructions

**P ▲ R ▲ D O X®**  
**S E C U R I T Y S Y S T E M S**  
780 Industriel Blvd., St-Eustache (Quebec) J7R 5V3 CANADA  
Tel.: (450) 491-7444 Fax: (450) 491-2313  
[www.paradox.ca](http://www.paradox.ca) UDS2000-EQ13

PRINTED IN CANADA - 03/2003

## Introduction

WinLoad for Windows<sup>®</sup> was developed to simplify and speed up the task of programming Paradox<sup>®</sup> control panels.

- Remote upload or download at a speed of 300 baud when using a modem
- On-site upload or download at a speed of 300 baud when using a modem with an ADP-1.
- On-site upload or download at a speed of 19,200 or 38,400 baud (DigiplexNE only) when connecting directly to the **Digiplex™** or **DigiplexNE™** control panel with a Paradox **306 Adapter** (modem not required).

WinLoad's database can be installed locally (installed and stored in your PC) or on a network thus allowing more than one user to access the same database. Refer to the *WinLoad's Online Help* for more details.



**If you are upgrading WinLoad from a previous version, it is recommended that you backup your database before upgrading. To do so, click Setup → Utilities → Backup. For more information, refer to the WinLoad Help File. If you are updating WinLoad from a previous version, make sure that WinLoad is installed in the same directory that the previous version of WinLoad was stored.**

## Local Installation



**Before installing WinLoad, close all open or running applications (i.e. Anti-virus applications).**

Insert the WinLoad CD into your CD-ROM drive.

1. If the auto run feature is enabled go to step 4. Otherwise, click **Run** from the **Start** menu.
2. Type the appropriate drive indicator (x:\) followed by the path containing the **setup.exe** file or click **Browse** to browse available drives for the setup.exe file. Click **OK**.
3. The **Choose Destination Location** window will now appear. This determines where the WinLoad program will be installed. We recommend you do not change the default path and name. Click **Next**.
4. The **Choose Database Destination** window will appear. This determines where WinLoad's database will be installed. Click **Next**.
5. The **Setup Complete** window will appear. Click **Finish**.

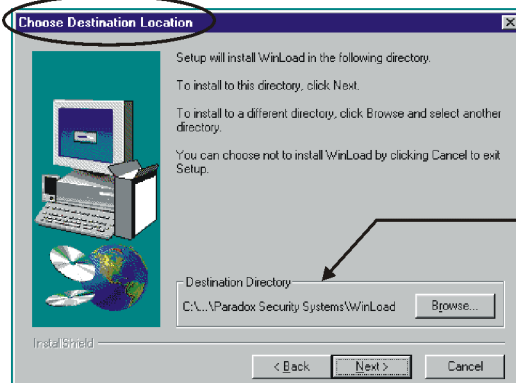
## Installing WinLoad on a Network



**If WinLoad is to be installed on the network, do not run the software on the same network computer that is being used to store the client databases. This may cause the database to experience some problems. If installing WinLoad on a network, full rights should be given by the network administrator to access the selected network directories that will store WinLoad's database(s).**

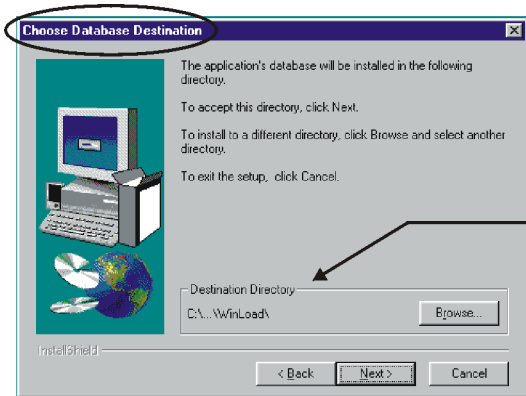
**Before installing WinLoad, close all open or running applications (i.e. Anti-virus applications).**

1. Insert the WinLoad CD into your CD-ROM drive.
2. If the auto run feature is enabled go to step 4. Otherwise, click **Run** from the **Start** menu.
3. Type the appropriate drive indicator (x:\) followed by the path containing the **setup.exe** file or click **Browse** to browse available drives for the setup.exe file. Click **OK**.
4. The **Choose Destination Location** window will appear. This determines where the WinLoad program will be installed. It is better to install the WinLoad program locally on each PC, therefore, we recommend you do not change the default path and name. Click **Next**.




This is where the WinLoad program will be installed. We recommend that you do not change the default path and name. Click **Next**.

- The **Choose Database Destination** window will appear. This determines where WinLoad's database will be installed. Click **Browse** to select a directory on the network.




This is where WinLoad's Database will be installed. Click **Browse** to select where on the network WinLoad's Database will be installed. Once selected, click **Next**.

 **When installing WinLoad on other PCs that will have access to the same WinLoad database, make sure to select the same database directory.**

- The **Setup Complete** window will appear. Click **Finish**.

## Starting WinLoad for the First Time

- Before starting WinLoad, make sure your display is set for small fonts. If you're not sure, click **Start** → **Settings** → **Control Panel**. Double-click **Displays**, and then select the **Settings** tab. Click **Advanced**, select **small fonts** from the **Font Size** list, and click **OK**.
- Click **Start** → **Programs** → **WinLoad**.
- Select the desired language and then click **Ok**.
- The **Security Code** window will appear. Type a code of your choosing in the first text box and confirm your code by re-entering the code in the second text box. Click **OK**.

 **It is very important that you take the time to write down your security code. If for any reason, you have to re-install or move the software to another directory, this security code will have to be entered again. If the code is lost, you will not be able to access your database. If WinLoad was installed on the network, be sure to use the same security code on all the PCs that are to access the same WinLoad database.**

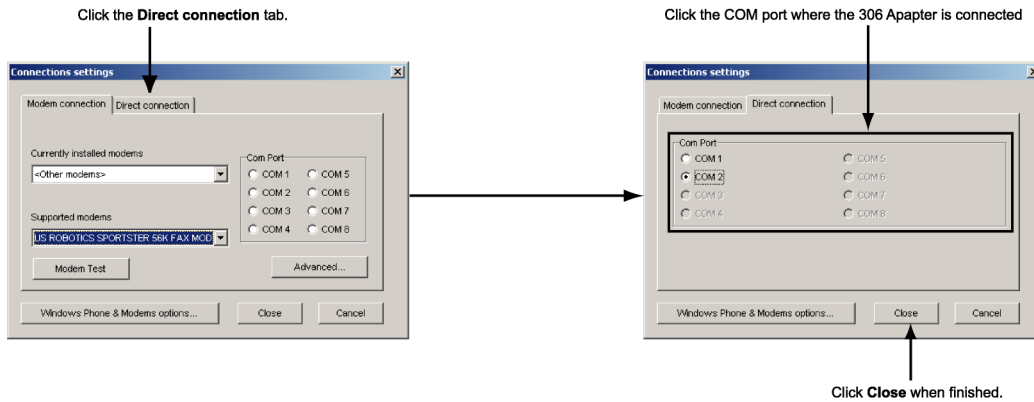
- A dialog box will appear prompting you to type your user name and password as well as a secret question and answer. The secret question and answer feature is for when you forget your user name and/or password. The default user name is **Master** and the default password is **1234**. Select a secret question or enter one of your own in the **Secret Question** list. Type a secret answer to the secret question in the **Secret Answer** text box. Click **OK**. To change the user name and/or password or to create new user names and/or passwords, click **Passwords** from the **Setup** menu.
- The Connection setting dialog box will automatically appear the first time you enter WinLoad (see below).

## Communication Settings

WinLoad's communication settings must be configured properly in order to establish contact between WinLoad and the control panel. There are two methods with which communication can be made, direct connect - communication using a 306 Adapter (Digiplex/DigiplexNE only) or communication through a modem.

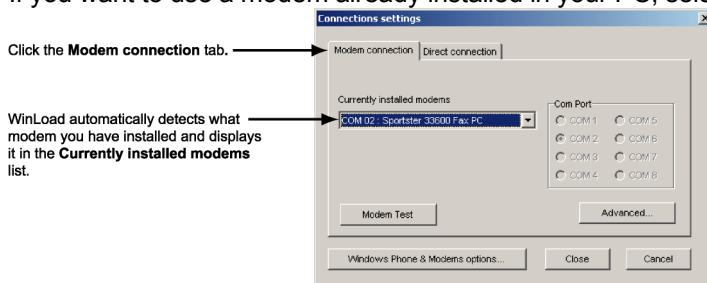
### *Direct Connection with a 306 Adapter:*

- Click **Connections** from the **Setup** menu in the Main window. The Connection settings dialog box will appear.
- Click the **Direct connection** tab and click the COM port where your 306 Adapter is connected. Click **Close** to exit.

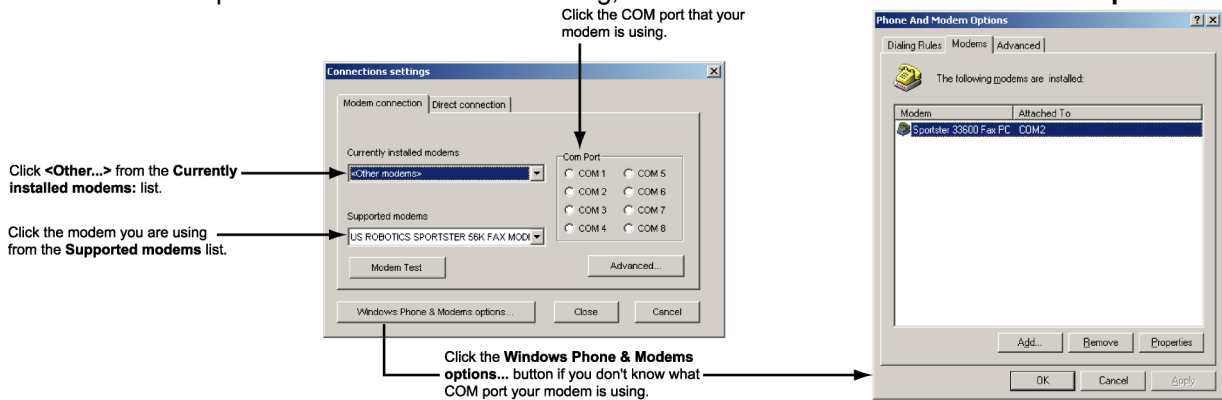


**Communication through a Modem:**

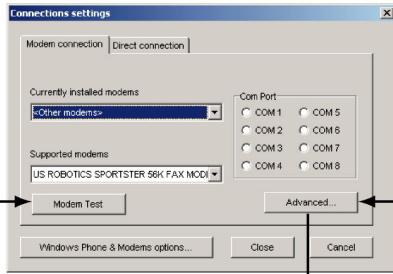
1. Click **Connections** from the **Setup** menu in the Main window. The Connection settings dialog box will appear.
2. Click the **Modem connection** tab. WinLoad will automatically detect what modem you have installed in your PC and display it in the **Currently installed modems** list.
  - a. If you want to use a modem already installed in your PC, select it from the **Currently installed modems** list.



- b. If you want to use a different modem, click **<Others...>** from the **Currently installed modems** list. Click the desired modem from the **Supported modems** list and click the COM port your modem is using. If you don't know what COM port the selected modem is using, click the **Windows Phone & Modems options...** button.



3. With the correct modem being displayed, click the **Advanced** button to define the modem configuration. The Advanced Modem Setup dialog box will appear. Set up the options as necessary (see figure on the next page) and click **Close**.
4. Perform a modem test to verify whether the modem is communicating properly with the control panel and click **Close** when complete.
5. Click **Close** when finished.



Click the **Modem test...** button to test whether your modem will connect with the control panel.

Click the **Advanced...** button to configure the modem connection.

**1. Reverse Command:** This section places the modem in Auto-answer mode. Click the ;ATA check box if your modem uses the A dial modifier. Click the R check box if your modem uses the R dial modifier.

**2. Dialing Condition:** Click the Wait for dial tone check box if you are connecting remotely through a telephone line. Click the Blind dialing (with ADP-1) check box if connecting locally through a modem and ADP-1.

**3. Modem Response Optimization:** Click the Enabled check box to enable the Automatic Optimization function. WinLoad will automatically adjust the modem response to the required setting when connecting to the control panel.

**4. Rings before answer incoming call:** Click the check box that corresponds to the desired amount of rings you wish to wait before answering an incoming call.

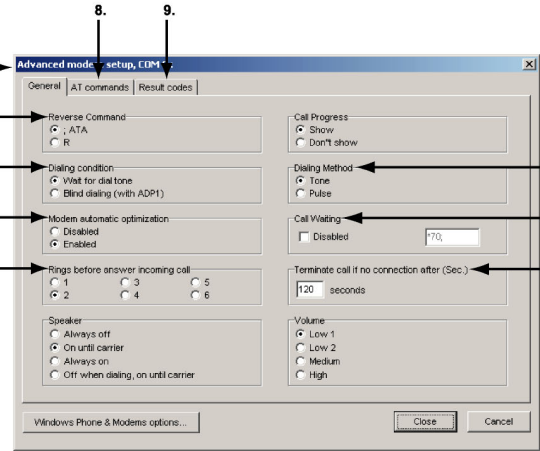
**5. Dialing Method:** Set the same dialing method (Tone or Pulse) to that programmed in the control panel.

**6. Call Waiting:** This function disables the call waiting feature of a telephone line that is being used by WinLoad.

**7. Terminate call if no connection after...:** Enter the amount of time you wish the modem to try connecting with the control panel before hanging up.

**8. AT Commands Tab:** Note: This tab is for advanced users only. Program the modem's initialization strings in this tab. Normally, when a modem is selected, WinLoad will automatically program the proper strings. If there is a communication problem, you may have to use the tab to establish contact between WinLoad and the control panel. Refer to the WinLoad Online Help for more information.

**9. Result Codes Tab:** Note: This tab is for advanced users only. Program the result codes that the modem will use to confirm actions that it has just performed. The codes displayed are the default result codes that most modems use. Refer to the WinLoad Online Help for more information.

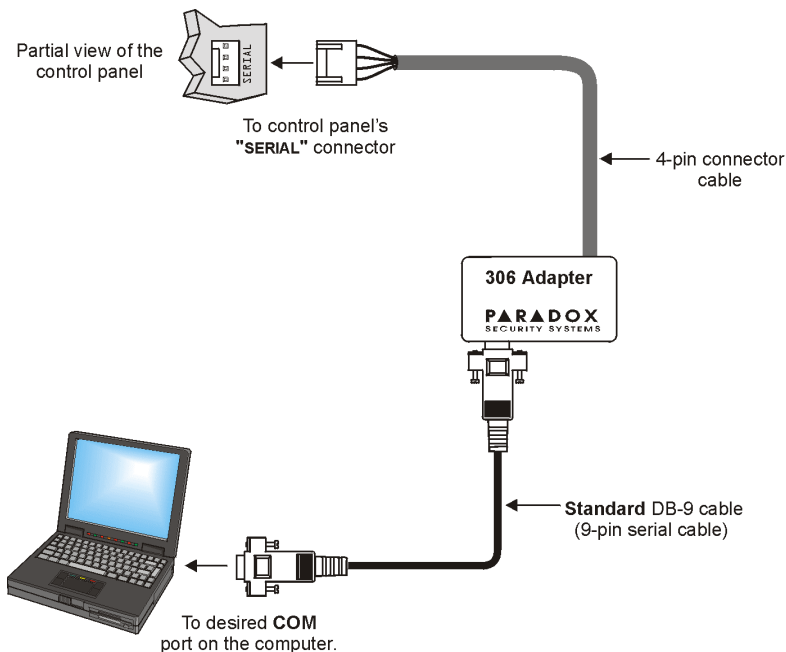


## Connecting to Digiplex or DigiplexNE using a 306 adapter

The 306 Adapter is used for on-site direct connection between WinLoad and the control panel. To connect a 306 Adapter:

1. Connect the 4-pin connector cable of the 306 Adapter to the "SERIAL" connector on the control panel.
2. Connect the Standard DB-9 Cable (9-pin serial cable) of the 306 Adapter to the desired COM Port on your computer.
3. Configure your communication settings for direct connection. Refer to *Communication Settings* on page 2.

**Note:** The 306 Adapter can only be used with a Digiplex or DigiplexNE control panel. Only the DigiplexNE can communicate at 38,400 baud.



# Using WinLoad

After starting the software, the client account window will appear with any client accounts that have already been created. If you have not created any client accounts follow steps 1 to 5. Otherwise, you can double-click the desired client account to begin communication or to perform any modifications.

1. Click **New** from the **Accounts** menu to create a client account. The screen shown in Figure 1 will appear in the **Information** tab. A minimum amount of information is required in order to function properly as indicated in Tables 1 and 2 (see below). Complete the remaining information as required. Click **Save** from the **Accounts** menu to save the recorded information.

Figure 1: Creating an Account

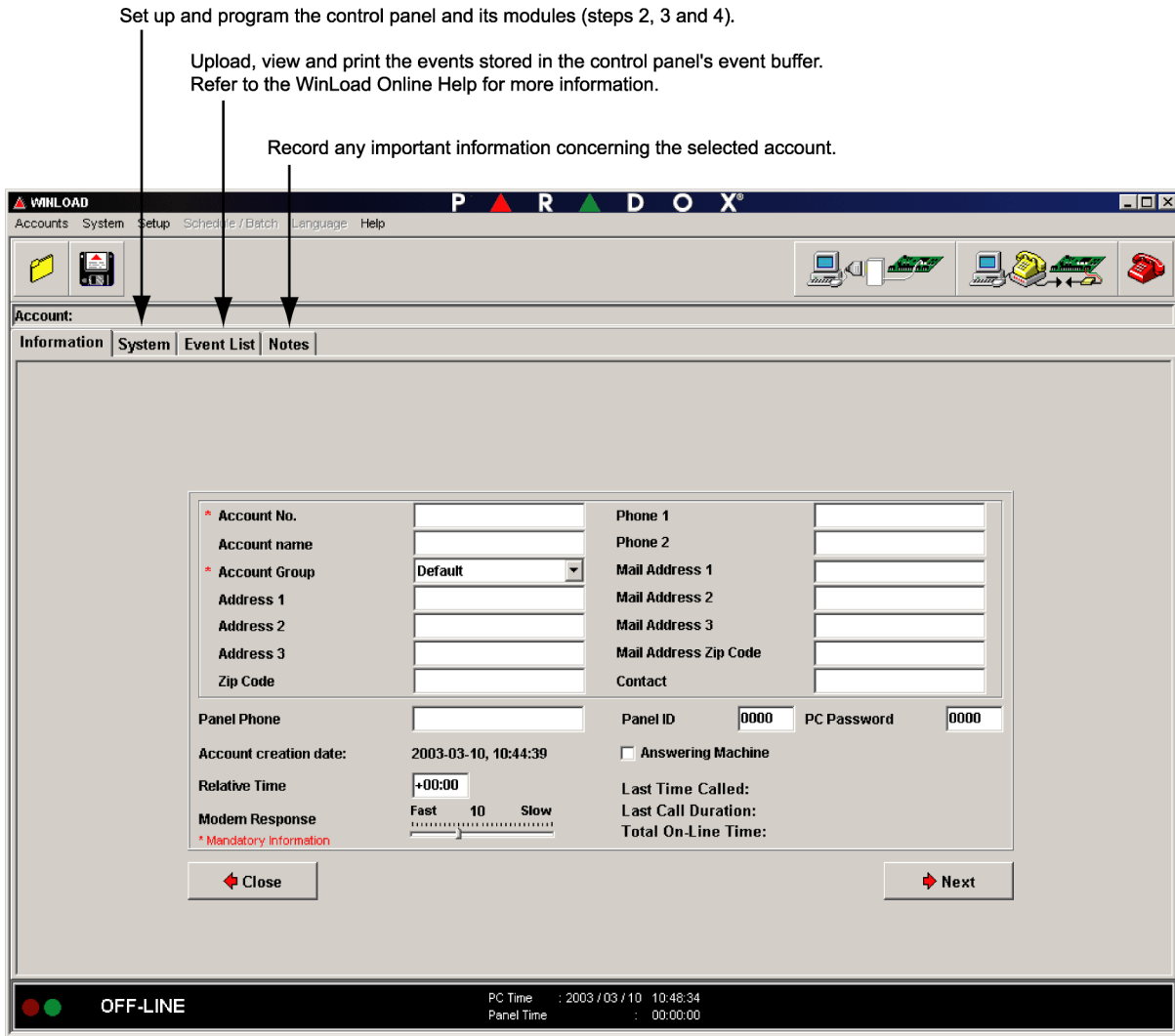


Table 1: Mandatory Information

<b>Account No.:</b>	Type the desired client account number.
<b>Account Group:</b>	Select the desired account group from the <b>Account Group</b> list.

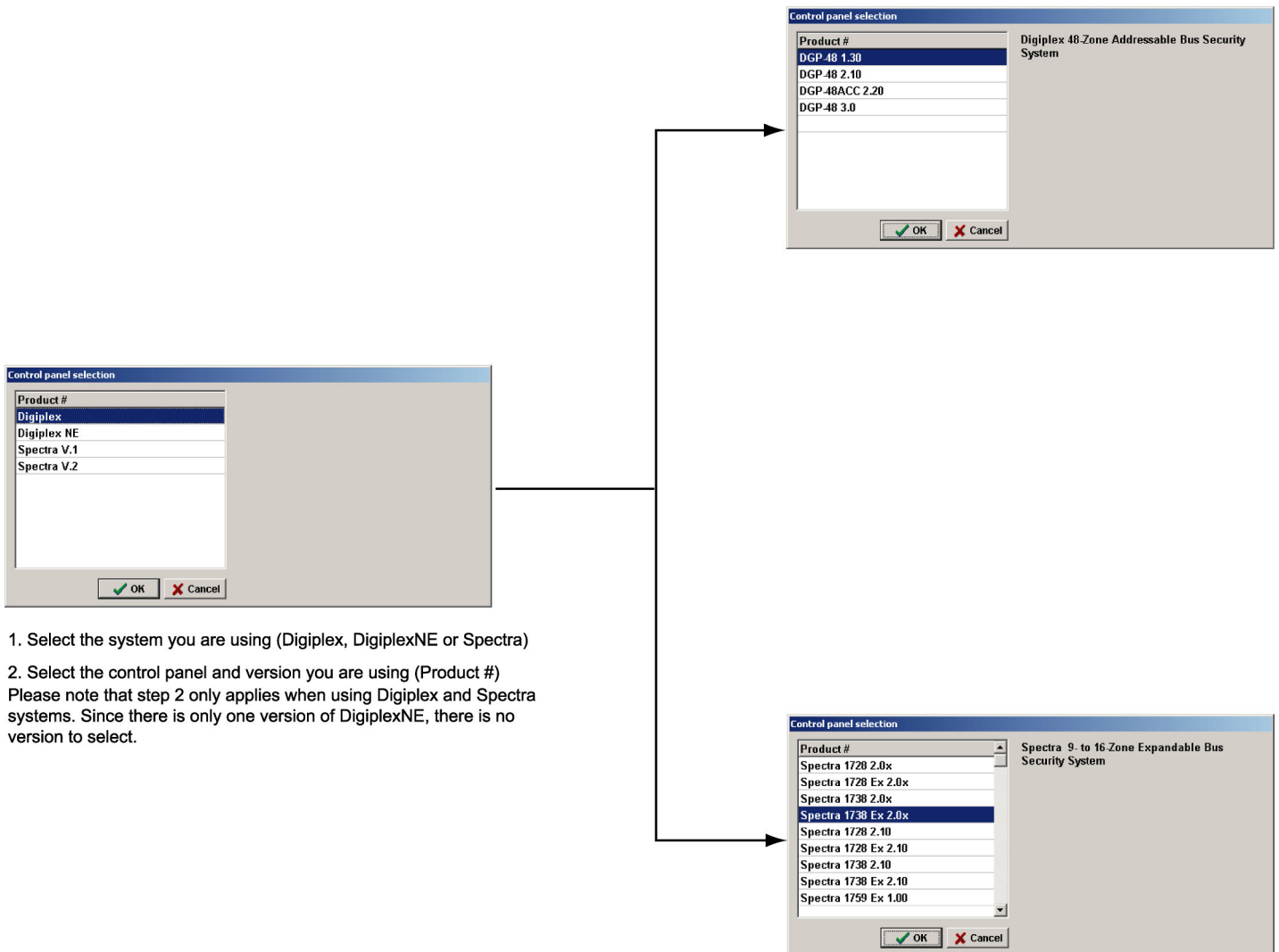
Table 2: Important Connection Information

The following information is important when trying to connect WinLoad with the control panel.

<b>Panel Phone:</b>	Type the telephone number to which the control panel is connected.
<b>Panel ID &amp; PC Password:</b>	Type the same Panel ID and PC Password as programmed in the control panel. Otherwise, the software will not be able to communicate with the control panel.
<b>Relative Time:</b>	If your client site is located in a different time zone, you can compensate for the time difference by adjusting the Relative Time.
<b>Modem Response:</b>	The Modem Response can be set from Fast to Slow. When using a high-quality modem and/or telephone line, you can lower the Modem Response. A lower Modem Response setting increases the speed of communication with the control panel. To have WinLoad adjust the Modem Response automatically, enable the function in the modem setup (page 4).

- After creating a client account (see step 1 on page 5), you must define which control panel is being used with the current client account. Click the **System** tab and the Control panel selection dialog box will appear as shown in Figure 2. First select the type of control panel (Digiplex, DigiplexNE or Spectra™) and then the appropriate version of the control panel.

Figure 2: Selecting a Control Panel



- Select the system you are using (Digiplex, DigiplexNE or Spectra)
- Select the control panel and version you are using (Product #)  
Please note that step 2 only applies when using Digiplex and Spectra systems. Since there is only one version of DigiplexNE, there is no version to select.

- The next step is to connect to the selected control panel. Before doing so, make sure that the communication settings have been properly set as detailed in *Starting WinLoad for the First Time* on page 2. Click the appropriate button as demonstrated in Figure 3.



**In order to connect or disconnect locally using a modem and an ADP-1, you must force the control panel to answer the incoming WinLoad call and once finished, to hang up. To do so:**

**Spectra:** Click the Modem button and when you hear the modem begin to dial, using the keypad, press [ENTER], then enter the [INSTALLER/MASTER CODE], and then press either the [FORCE] button to answer or the [STAY] button to hang up.

**Digiplex/DigiplexNE:** Click the Modem button and when you hear the modem begin to dial, using the keypad, press and hold the [0] key, enter the [INSTALLER/MASTER CODE], and then press either the [ARM] button to answer or the [DISARM] button to hang up.

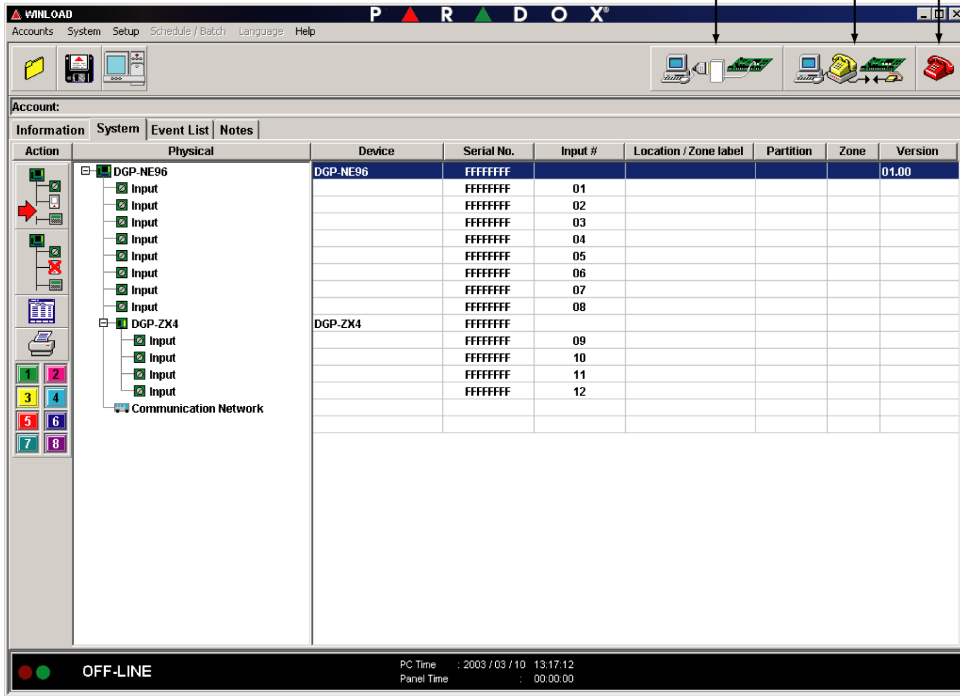
**Refer to the appropriate installation guide for more information.**

Figure 3: Connecting to a Control Panel

**Hang Up Button:** Click here to hangup or disconnect.

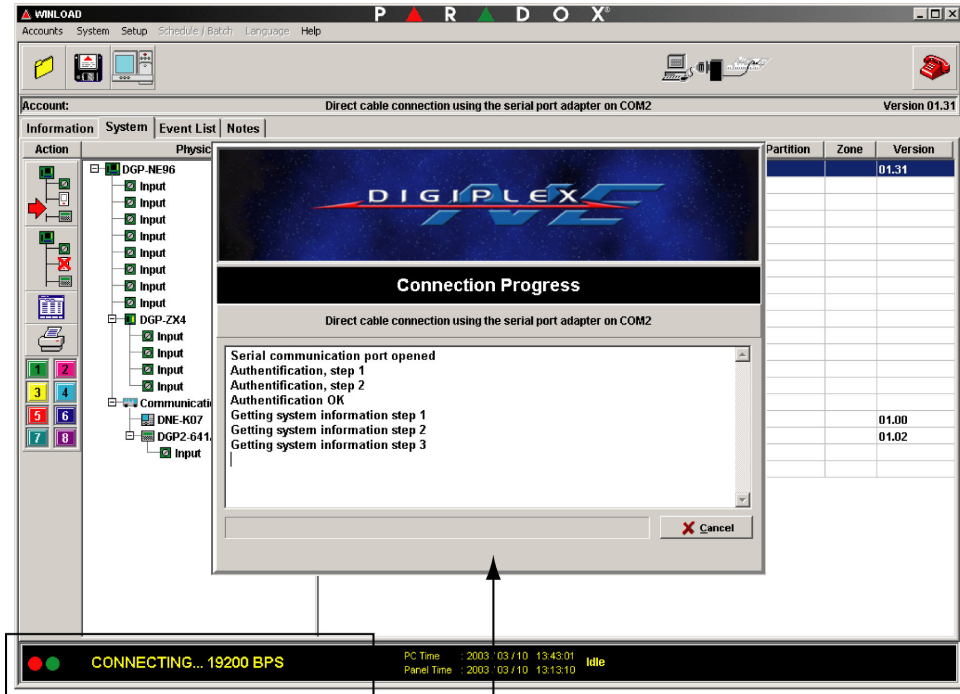
**Connect with Modem Button:** Click here to connect remotely through a modem or to connect on-site using a modem and an ADP-1 Adapter.

**Direct Cable Connection Button:** Click here to connect on-site using the 306 Adapter (Digiplex and DigiplexNE only).



- While the control panel is connecting to WinLoad, a Connection Progress window will appear showing WinLoad's progress (Figure 4). Once the control panel is connected to WinLoad, the Connection Progress window will disappear. Refer to Figure 5 (page 8).

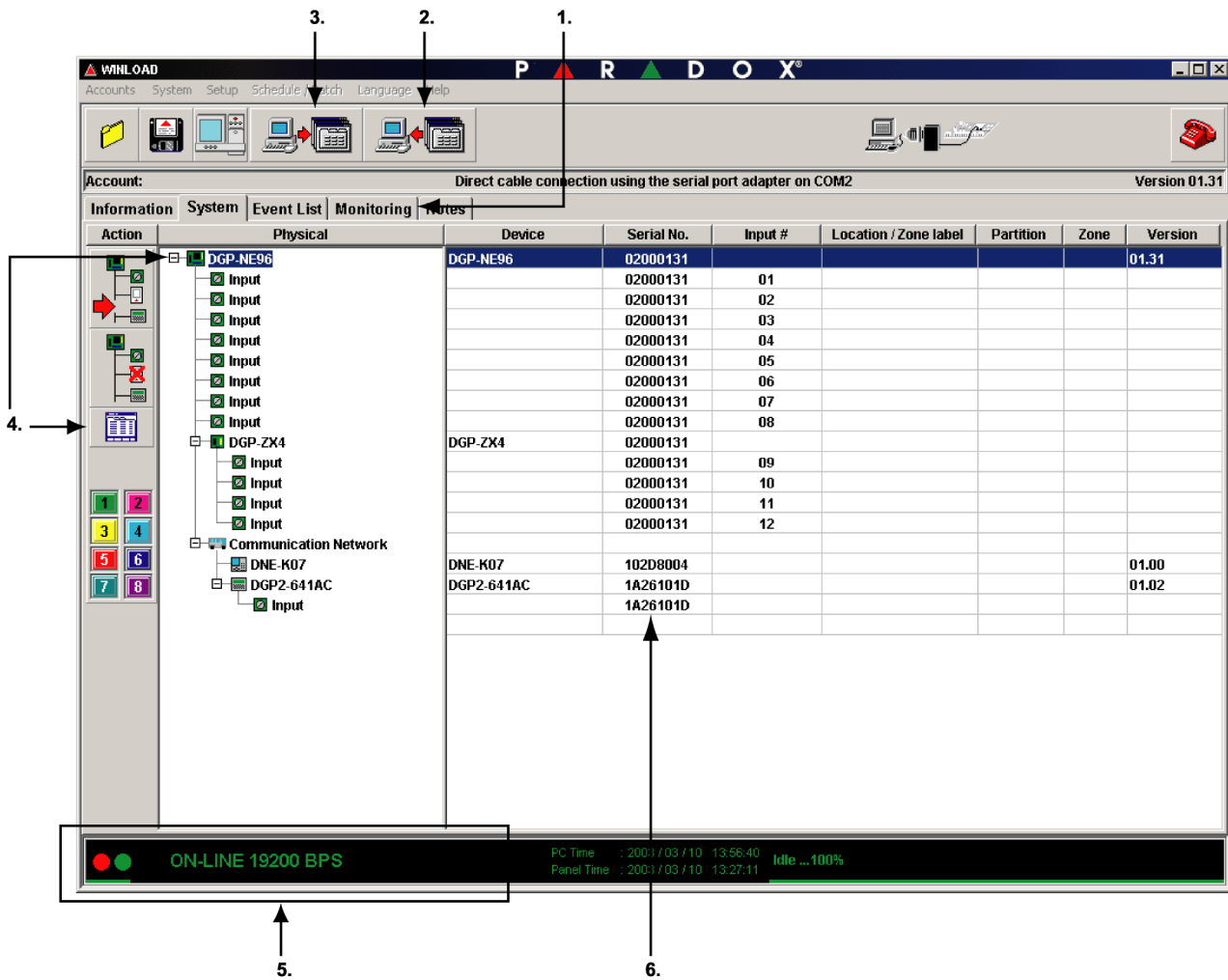
Figure 4: Connecting to WinLoad



A Connection Progress window appears showing WinLoad's progress in connecting with the control panel. The Connection status bar will read "CONNECTING... 19200BPS" or "CONNECTING... 38400BPS" (DigiplexNE only) if connecting locally using a 306 Adapter. The Connection status bar will read "CONNECTING... 300BPS" if connecting remotely using a modem or locally using a modem and an ADP-1.



Figure 5: WinLoad On-Line with Control Panel



1. The Monitoring tab appears only when WinLoad has connected to the control panel. Click this tab for on-line monitoring. On-line monitoring allows you to monitor the client's alarm system in real time (live). This means you can view events as they transpire. Refer to WinLoad's on-line help for more information.

2. The Panel to PC Transfer button appears only when WinLoad has gone on-line with the control panel. Click the button to commence with the complete upload of all the modules already connected to the control panel. The button will save time from manually entering all the modules and then having to individually upload each module.

3. The PC to Panel Transfer button appears only when WinLoad has gone on-line with the control panel. Click the button to commence with the complete download of all the modules to be connected to the control panel. The button will save time from manually entering all the modules and then having to individually download each module.

4. Click the **Programming** button to program and setup the selected device.

OR

Right-click any device in the window to program and setup the selected device.

5. The Connection status bar will turn green and indicate "ON-LINE 19200 BPS" or "ON-LINE 38400 BPS" (DigiplexNE only) if connected locally using a 306 Adapter. The Connection status bar will also turn green and indicate "ON-LINE 300 BPS" if connected remotely using a modem or locally using a modem and an ADP-1.

6. WinLoad will automatically display all modules on the control panel's bus after connecting to the control panel. WinLoad will also display the serial numbers of all modules on the bus (Digiplex/DigiplexNE only).

5. To create another account, go off-line with the control panel by clicking the **Hang Up** button (see Figure 3 on page 7), click **Close** from the **Accounts** menu (or click the **Close** button) and return to step 1 (page 5).