



Comes From Surveillance, Beyond VR

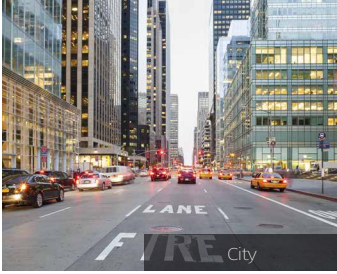
GV-VR360

360 degree dual fisheye camera can provide real-time panorama view



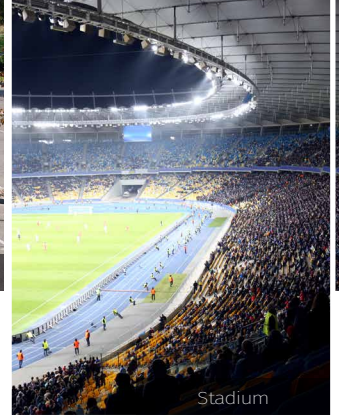
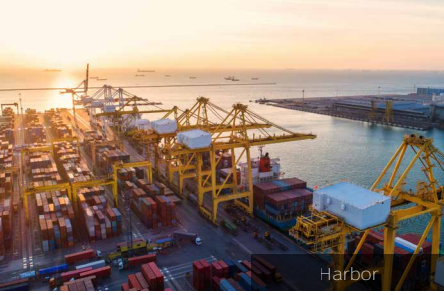
- Snapdragon 650
- Youtube Live video
- Real-time stitching and de-wrapping dual fisheye video on device at 4K@30fps
- APP Support
- Intelligent IR
- Buile-in Mic
- VR Mode





Application

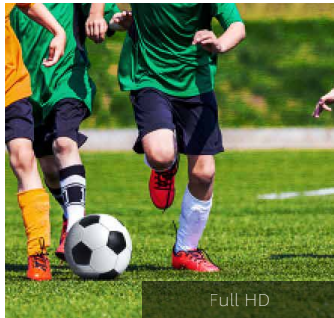
Provide a wide vision of security environments, such as airports / railway station / city street / harbor / highway and other areas.



Features

360 degree dual fisheye camera can provide real-time panorama view

Dual lenses record the entire world around you. Creates interactive 360° video in 4K quality.



Youtube Live Video

Real-time VR 360 degree Live video streaming sharing on Youtube



APP Support

Through connecting to GV-eye, a mobile phone APP, which will show you on screen details of each angle.



VR Mode

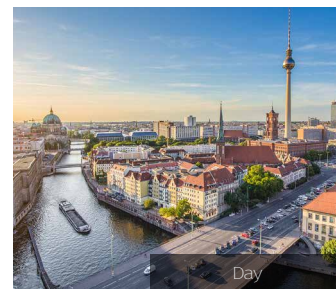
With Cardboard and the Youtube mobile app, you can watch 360 degree video for an immersive experience form GV-VR360

Build-in Mic

GV-VR360 supports build-in mic with water resistance. (IP67 certified)

Intelligent IR

GV-VR360 also provides an IR module which enables the night mode capability. With Intelligent IR design, the AE and IR LED brightness perform gracefully together to get best image quality.



- Qualcomm Snapdragon 650
- 360 degree dual fisheye camera can provide real-time panorama view
- Real-time on edge dual fisheye video on device at 4K@30fps
- Youtube Live video
- VR Mode
- APP Support
- Intelligent IR
- Build-in Mic

Product Spec

VR360

8MP H.265 Low Lux WDR IR Virtual Reality IP Camera

- 1/2.9" progressive scan CMOS
- Dual stream supports both H.265 and H.264 format
- Up to 30 fps at 3840×2160
- Intelligent IR
- Ingress protection (IP67)
- Vandal resistance (IK10)
- Built-in micro SD card slot
- Build-in Mic
- ONVIF (Profile S) conformant



Camera		
Image Sensor		1/2.9" progressive scan CMOS
Picture Elements		3840 (H) x 2160 (V)
Minimum Illumination	Color	0.05 Lux
	B/W	0.04 Lux
	IR ON	0 Lux
Shutter Speed		Automatic
White Balance		Automatic, Manual
Gain Control		Automatic
Lens		
Megapixel		Yes
Day/Night		Yes (with removable IR-cut filter)
Lens Type		Fixed
Focal Length		1.05mm
Maximum Aperture		F/2.25
FOV		360°
Operation	Focus	Fixed
IR LED Quantity		4 IR LEDs
Max. IR Distance		10m
Video Resolution		
Main Stream	16:9	3840 x 2160, 2560 x 1440, 1920 x 1080, 1280 x 720
Sub Stream	16:9	3840 x 2160, 1280 x 720, 640 x 360
Network		
Interface		10/100 mbps
Protocol		TCP, UDP, DHCP, DDNS, HTTP, HTTPS, NTP, ONVIF (Profile S), RTSP, SMTP

Operation		
Video Compression		H.265, H.264
Video Stream	Stream 1	H.265 or H.264
	Stream 2	H.265 or H.264
Frame Rate		30 fps at 3840 x 2160 * The frame rate and the performance may vary depending on the number of connections and data bitrates (different scenes)
Image Setting		Brightness, Contrast, Saturation, Sharpness, White Balance, Flicker-less, Image Orientation, D / N Sensitivity
Audio Compression		G.711 or AAC
Audio Support		Two-way Audio (Coming Soon)
Mechanical		
Connectors	Power	PoE
	Ethernet	Ethernet (10/100 Base-T), RJ-45 cable
	Audio	Internal Mic, 3.5 mm
	Digital I/O	I/O wires
	MicroSD	Micro SD card slot (SD / SDHC / SDXC / UHS-I, Class 10) *UHS-II card type is not supported.
General		
Operating Temperature	Start-up	-20°C ~ 50°C (-4°F ~ 122°F)
	Operation	-30°C ~ 50°C (-22°F ~ 122°F)
Humidity		10% ~ 90% (no condensation)
Power Source		12V DC / POE+ (IEEE 802.3at)
Max. Power Consumption		12W
Dimensions		164 mm x 64 mm x 45.2 mm
Weight		580g (1.28lb)
Ingress Protection		IP67
Vandal Resistance		IK10 for metal casing
Regulatory		CE, FCC, RCM, VCCI compliant
Application		
Network Storage		GV-System (GV-DVR / NVR), GV-VMS
Smart Device Access		GV-Eye for iOS and Android
Live Viewing		IE, Mobile App
CMS Server support		GV-Control Center