

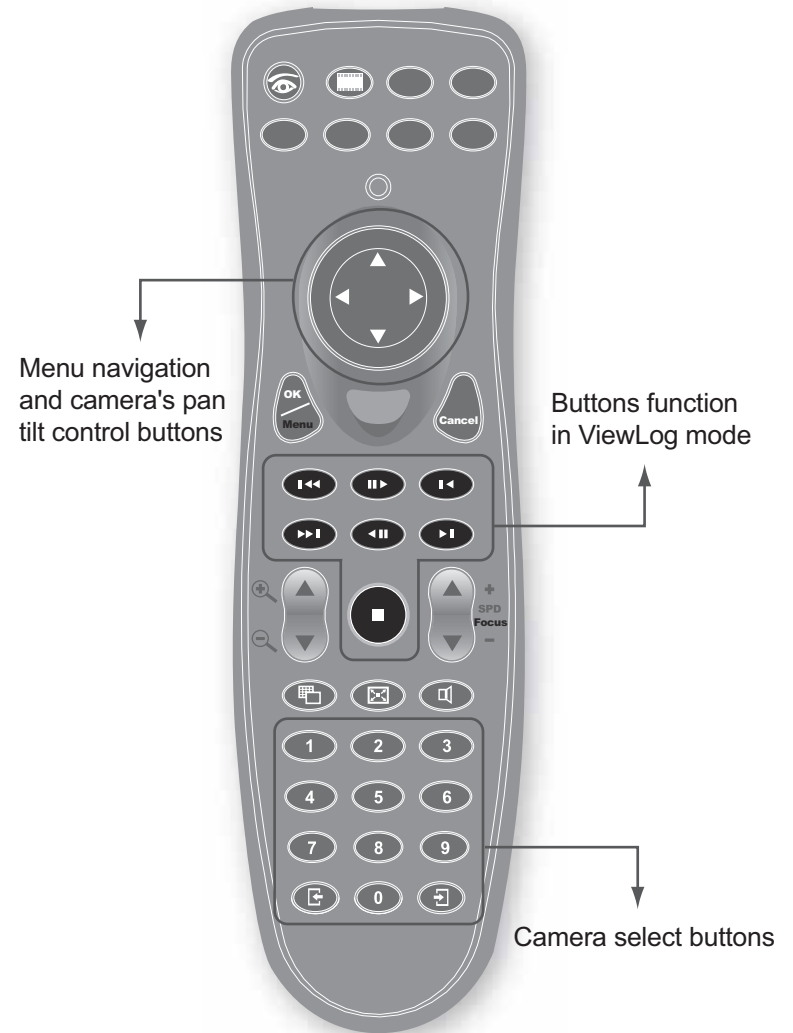
# IR Remote Control



**User's Manual**

## Table of Contents

Installation .....	3
Inserting Batteries .....	4
Remote Control Buttons .....	4
Changing the Main System OSD options .....	6
Changing the ViewLog OSD options .....	8
Fast Key Reference .....	9
Main System .....	9
ViewLog .....	10
PTZ Camera .....	11
Troubleshooting .....	11



## Installation

Plug the receiver into a USB port. Immediately you are able to use the remote control.

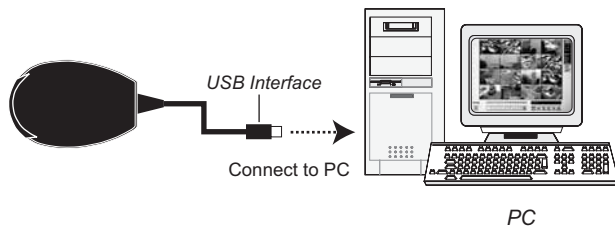
Make sure the following requirements have been met:

### ◆ Packing List

Remote Control x 1



Receiver x 1



### ◆ System Requirement

Windows 2000 or XP

### ◆ Software Requirement

V 6.1 or above

**Note:** There are three types of remote controls, A, B and C type. Type A remote control can only be used with Type A receiver. It can't be used to Type B or C receiver.

## Inserting Batteries

Insert two AAA batteries into the remote control. Make sure that you match the "+" and "-" on the batteries with the "+" and "-" symbols inside the battery compartment.

## Remote Control Buttons



### Main System

Enter the Main System mode



### ViewLog

Enter the ViewLog mode



### Direction buttons

Navigate the on-screen display (OSD) menu; Change the Time Setting in the ViewLog mode; Control PTZ camera



### OK/Menu

Open the OSD menu; Enter the settings



### Cancel

Close the OSD menu; Return to the previous menu; Call up the menu to exit Main System or ViewLog

**Previous Event**

Rewind to view the previous event

**Next Event**

Forward to view the next event

**Play/Pause**

Play and pause a video file

**Rewind**

Rewind and pause a video file

**Previous Frame**

Rewind to view the previous frame

**Next Frame**

Forward to view the next frame

**Stop**

Stop a video file

**Zoom in/out**Zoom in and out the display image of PTZ camera in the **Main System** mode; Zoom in and out the display image in the **ViewLog** mode**SPD/Focus + -**Increase and decrease the focus of PTZ camera in the **Main System** mode; Speed up and slow down the playing of a video file in the **ViewLog** mode**Screen Division**

Switch the screen divisions

**Full Screen**

Turn the full-screen mode on and off

**Mute**

Turn the sound on and off

**Number buttons**Change the camera channel; Change the Time Setting in the **ViewLog** mode**Page Up**

Switch to the previous screen

**Page Down**

Switch to the next screen

## Changing the Main System OSD options

To change the Main System on-screen display (OSD) options with the remote control, follow the steps below:

1. Press **Main System** to enter the Main System mode.
2. Press **OK/Menu** to open the OSD (see Figure 1).
3. Use **Direction** to select a menu you want.
4. Press **OK/Menu** to open the menu.
5. Use **Direction** to select a menu option and then press **OK/Menu** to change the setting. Or simply press **OK/Menu** to enable or disable an option in the case of **Schedule** and **Camera Scan** menus.

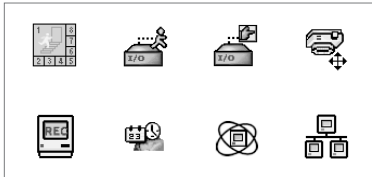


Figure 1



### Screen Division

Select the screen division from 1-channel to 16-channel modes



### Input Device

Select showing all input module panels or several module panels on the screen



### Output Device

Enable and disable output devices



### PTZ Camera

Enable and disable PTZ camera, the function of Preset Go, Auto (Auto pan), AF (Auto focus) and Hiding PTZ Panel



### Monitor

Select cameras to start or stop monitoring



### Schedule

Enable and disable schedules



### Camera Scan

Enable and disable the rotation through screen divisions



### Network

Select remote applications, including Modem Server, TCP Server, Multicast Server, Connect to VSM, Twin Server, WebCam Server and Connect to Center V2

## Changing the ViewLog OSD options

To change the ViewLog on-screen display (OSD) options with the remote control, follow the steps below:




1. Press  **ViewLog** to enter the ViewLog mode.
2. Press **OK/Menu** to open the OSD (see Figure 2).
3. Use  **Direction** to select a menu you want.
4. Press **OK** to open the menu.
5. Use  **Direction** to select a menu option and then press **OK/Menu** to change the setting.



Figure 2



### Video Event Search

1. Press the **Direction** buttons ◀ and ▶ to move back and forward on an OSD time. (Month/Date/Year Hr.:Min.:Sec.)
2. Use **number buttons** to enter a desired time or press the **Direction** buttons ▲ and ▼ to change the display time.
3. Press **OK/Menu** to view the search result

If the specified time can't be located, you will be prompted to select the previous or next video event available.



### View Mode

Select the view modes, including Single View, Thumbnail View, Quad View and Multi View.

## Fast Key Reference

**Caution:** Don't define the same shortcut keys that the remote control has used, or it will lead to the malfunction of the IR remote control.

### Main System

Esc	F1	F2	F3	F4	F5	F6	F7	F8	F9	F10	F11	F12	Print	Scroll	Pause
~	1	2	3	4	5	6	7	8	9	0	=	←Back	Insert	Home	Page Up
Tab	Q	W	E	R	T	Y	U	I	O	P	[	]	Delete	End	Page Down
Caps	A	S	D	F	G	H	J	K	L	;	'	Enter			
Shift	Z	X	C	V	B	N	M	<	>	?	\	/		↑	
Ctrl		Alt											←	↓	→

Icon *	Key **	Function
	Ctrl+Alt+'1'	Enter the Main System mode
	Alt+ '←', Alt+ '→' Alt+ '↑', Alt+ '↓'	Navigate the on-screen display (OSD) menu
	Ctrl+Enter	Open the OSD menu; Enter the settings
<b>Cancel</b>	ESC	Close the OSD menu; Return to the previous menu
	Ctrl+Alt+'9'	Switch the screen division
	Alt+Enter	Turn the full-screen mode on and off
1 ~ 9,0	Alt+Num 1 ~ 9 and 0	Change the camera channel
	Ctrl+Alt+F1	Switch to the previous screen
	Ctrl+Alt+F2	Switch to the next screen
	Alt+'M'	Turn the sound on and off

- \* Icon for GeoVision IR Remote Control
- \*\* Key for PC keyboard

### ViewLog

Esc	F1	F2	F3	F4	F5	F6	F7	F8	F9	F10	F11	F12	Print	Scroll	Pause
~	1	2	3	4	5	6	7	8	9	0	=	←Back	Insert	Home	Page Up
Tab	Q	W	E	R	T	Y	U	I	O	P	[	]	Delete	End	Page Down
Caps	A	S	D	F	G	H	J	K	L	;	'	Enter			
Shift	Z	X	C	V	B	N	M	<	>	?	\	/		↑	
Ctrl		Alt											←	↓	→

Icon *	Key **	Function
	Ctrl+Alt+'2'	Enter the ViewLog mode
	Alt+ '←', Alt+ '→' Alt+ '↑', Alt+ '↓'	Navigate the on-screen display (OSD) menu; Change the Time Setting
	Ctrl+Enter	Open the OSD menu; Enter the settings
<b>Cancel</b>	ESC	Close the OSD menu; Return to the previous menu
	(Media button)	Rewind to view the previous event
	(Media button)	Forward to view the next event
	(Media button)	Play and pause a video file
	(Media button)	Rewind and pause a video file
	(Media button)	Rewind to view the previous frame
	(Media button)	Forward to view the next frame
	(Media button)	Stop a video file
	Alt+ '+'	Zoom in the display image
	Alt+ '-'	Zoom out the display image
<b>SPD</b>	Alt+ Page Up	Speed up the playing of a video file
<b>SPD</b>	Alt+ Page Down	Slow down the playing of a video file
	Ctrl+Alt+'9'	Switch the screen division
	Alt+'M'	Turn the sound on and off
1 ~ 9,0	Alt+Num 1 ~ 9 and 0	Change the Time Setting; Change the camera channel

- \* Icon for GeoVision IR Remote Control
- \*\* Key for PC keyboard

## PTZ Camera

Esc	F1	F2	F3	F4	F5	F6	F7	F8	F9	F10	F11	F12	Print	Scroll	Pause					
~	1	2	3	4	5	6	7	8	9	0	-	=	←Back	Insert	Home	Page Up	Num	/	*	-
Tab	Q	W	E	R	T	Y	U	I	O	P	[	]		Delete	End	Page Down	7	8	9	+
Caps	A	S	D	F	G	H	J	K	L	:	"	Enter					4	5	6	
Shift	Z	X	C	V	B	N	M	<	>	?	Shift	\			↑		1	2	3	
Ctrl		Alt									Alt	Ctrl		←	↓	→	0	.		Enter

Icon *	Key **	Function
	Alt+ '←', Alt+ '→' Alt+ '↑', Alt+ '↓'	Control PTZ camera
	Ctrl+Enter	Open the OSD menu; Enter the settings
<b>Cancel</b>	ESC	Close the OSD menu; Return to the previous menu
	Alt+ '+'	Zoom in the display image of PTZ camera
	Alt+ '-'	Zoom out the display image of PTZ camera
<b>Focus +</b>	Alt+ Page Up	Increase the focus of PTZ camera
<b>Focus -</b>	Alt+ Page Down	Decrease the focus of PTZ camera

- \* Icon for GeoVision IR Remote Control
- \*\* Key for PC keyboard

## Troubleshooting

Use the following information to solve common problems.

### The LED does not blink when a button is pressed.

- Replace the batteries. See "Inserting batteries".

### The LED blinks when a button is pressed, but the system does not respond.

- Make sure that you are less than 7-meter operating distance and 30-degree receiving angle from the receiver.
- Make sure that nothing is blocking the infrared remote sensors on the remote control or the receiver.