

شرکت ایمن تصویر آوا

IMEN TASVIR AVA

سیستمهای ایمنی، نظارت و کنترل



آدرس : بزرگراه جلال آل احمد ( شرق به غرب )

بعد از پل آزمایش، نرسیده به چهار راه آریافر

ساختمان صنعت، پلاک ۲۷۹ واحد ۲



تلفن ویژه ایمن تصویر : ۰۲۱-۴۹۰۷۵



ارتباط با ما : ۰۹۱۹۱۹۱۹۵۷۲



آدرس سایت : [www.imentasvir.co](http://www.imentasvir.co)



ایمیل : [info@imentasvir.co](mailto:info@imentasvir.co)

## WiFi USB Adapter



WiFi USB adapter with a mini USB converter

### Introduction

The WiFi USB Adaptor is designed to connect the GV IP devices to the wireless network. This product complies with IEEE 802.11 b/g/n (Draft 3.0) standards for wireless networking. The WiFi USB Adaptor is a plug-and-play device; you don't need to install any driver for the device to work.

### Compatible GV IP Devices

The WiFi USB Adaptor is compatible with the following hardware and firmware.

#### GV-Video Server

- ⊙ GV-VS04H, GV-VS04A (firmware V1.05 and later)
- ⊙ GV-VS12 (firmware V1.05 and later)
- ⊙ GV-VS11 (firmware V1.0 and later)

#### GV-Compact DVR

- ⊙ GV-Compact DVR V2 (firmware V1.07 and later)
- ⊙ GV-Compact DVR V3 4-CH (firmware V1.01 and later)
- ⊙ GV-Compact DVR V3 8-CH (firmware V1.0 and later)

#### GV-IP Cameras

- ⊙ GV-BX1200 Series (firmware V1.15 and later)
- ⊙ GV-BX1300 Series (firmware V1.15 and later)
- ⊙ GV-BX2400 Series (firmware V1.15 and later)
- ⊙ GV-BX3400 Series (firmware V1.15 and later)
- ⊙ GV-BX5300-6V (firmware V1.15 and later)

PN300, SQP133 (firmware V1.01 and later)

GV-IP Decoder Box, GV-Pad (firmware V1.02 and later)

GV-Mobile NVR System

### Specifications

Network Standard	IEEE 802.11 b/g/n (Draft 3.0)
Chipset	Ralink RT3070
Host Interface	USB 2.0 Backward Compatible (Standard-A Type connector)
Operating Frequency	802.11b/g/n (2412 ~ 2484 MHz)
Dimensions (L x W x H)	15 x 15 x 155 mm(0.59 x 0.59 x 6.10")
WPS Support	Yes
Installation Guide	<a href="#">Wi-Fi USB Adapter</a>

## GV-POEX0100 One-Port PoE Extender



- 10/100 PoE extender
- PoE (IEEE 802.3af) and PoE+ (IEEE 802.3at) compliant
- Extension up to 600 m (1,968.5 ft) using 5 GV-POEX0100
- Compatible with GV-IP Cameras
- No additional power supply required

### Introduction

GV-POEX0100 is a single-port, 10/100 PoE extender that can extend the distance between a PoE switch and a GV-IP Camera by 100 m (328.08 ft) for every extender installed. They can be serially connected, with no additional power supply, to transmit power and data to a GV-IP Camera as far as up to 600 meters (1,968.5 ft) away from a PoE switch.

### Requirements

The maximum distance allowed between a PoE switch and a GV-IP Camera depends on the PoE switch type, PoE power output of the connected device (PD) and the type of power supply. These can be summarized below.

#### GV-IP Cameras Powered by PoE

PD of GV-IP Cameras	Brand & Model		
	GeoVision		Third-Party PoE Switches (IEEE 802.3at)
	GV-POE0801 / 0811	GV-POE0400	
	GV-POE1601 / 1611	GV-POE0800	
	GV-POE2401 / 2411	GV-POE0810	
PD < 6.49 W (IEEE 802.3af)	600 m (1,968.5 ft)	400 m (1,312.34 ft)	400 m (1,312.34 ft)
PD 6.5 W ~ 12.95 W (IEEE 802.3af)	400 m (1,312.34 ft)	200 m (656.17 ft)	200 m (656.17 ft)
PD 13 W ~ 25.5 W (IEEE 802.3at)	200 m (656.17 ft)	-	-
PD > 25.5 W	-	-	-

#### Note:

1. Each GV-POEX0100 extends another 100 m (328.08 ft) between the PoE switch and the GV-IP Camera. Therefore, a distance of 200 m requires one GV-POEX0100 and 400 m (1,312.34 ft) requires three etc.
2. GV-POE0100 can only be connected using CAT-5e cables, TIA/EIA-568-B, with the maximum DC resistance of 9.38 ohms/100 m.

#### GV-IP Cameras Powered by PoE

Brand & Model	GeoVision		Third-Party PoE Switches (IEEE 802.3at)
	GV-POE0801 / 0811	GV-POE0400	
	GV-POE1601 / 1611	GV-POE0800	
	GV-POE2401 / 2411	GV-POE0810	
GV-IP Cameras	600 m (1,968.5 ft)	400 m (1,312.34 ft)	400 m (1,312.34 ft)

## SFP Transceiver



GV-LC10



GV-LC

### Introduction

The SFP Transceiver is designed to plug into the SFP port of the GV-POE Switch and is the interface between the switch and optical fiber cables. This product complies with IEEE 802.3z 1000BaseSX/LX standards. The SFP Transceiver is a hot swappable device; you can add or remove the device without powering down.

### Compatible GV-POE Switch

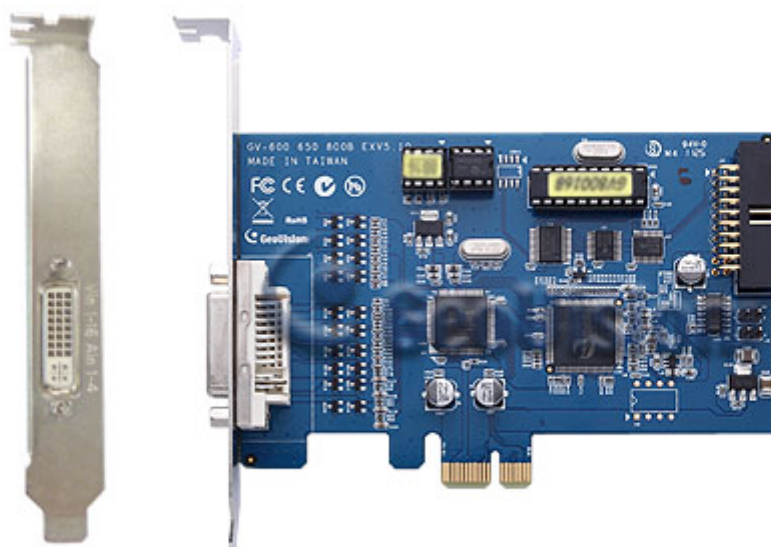
- GV-POE0801
- GV-POE0811
- GV-POE2401
- GV-POE2411
- GV-POE1601
- GV-POE1611

### Specifications

Model	GV-LC10	GV-LC
Network Standard	IEEE 802.3z 1000BaseLX	IEEE 802.3z 1000BaseSX
Wavelength	1310	850
Media	SMF	MMF
Distance	10 um, 10 km (32808 ft)	62.5 / 20 um, 220 / 550 m (722 / 1804 ft)
TX Power (dBm)	-9.5 ~ -3	-9.5 ~ -4
RX Sensitivity (dBm)	Max. -20	Max. -18
Connector Type	LC	
Operating Temperature	0 °C ~ 70 °C (32 °F ~ 158 °F)	

**Note:** Specifications are subject to change without notice.

## GV-800B Video Capture Card



GV-800B Card provides up to 16 video channels and 4 audio channels, recording up to 120 / 100 fps (NTSC / PAL) in total with H.264 software compression.

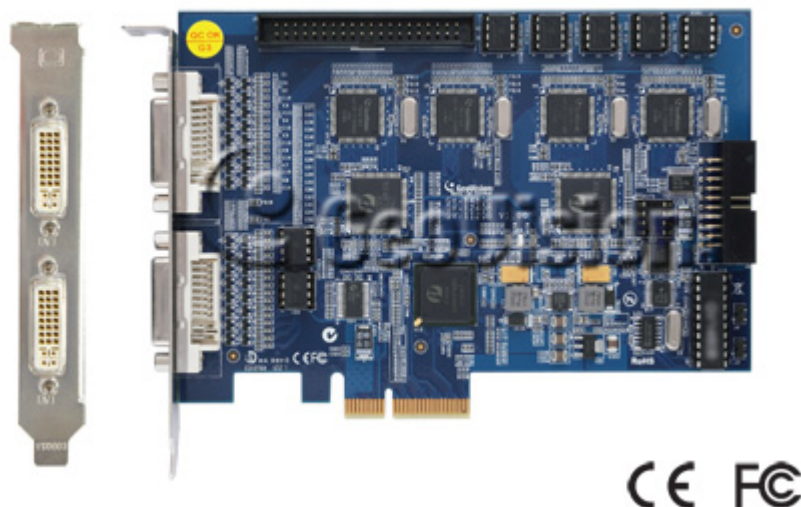
### Specifications

			GV-800B	GV-800B X 2
Interface			PCI-E (x1)	PCI-E (x1) x 2
Input Type			DVI	
Video Input			4, 8, 16 Cams	8, 12, 16, 20, 24, 32 Cams
Audio Input			4 Channels	8 Channels
Recording Rate	CIF	NTSC	4-port: 120 fps 16-port: 120 fps	4+4 port: 240 fps 16+16 port: 240 fps
		PAL	4-port: 100 fps 16-port: 100 fps	4+4 port: 200 fps 16+16 port: 200 fps
	D1	NTSC	4-port: 120 fps 16-port: 60 fps	4+4 port: 240 fps 16+16 port: 120 fps
		PAL	4-port: 100 fps 16-port: 50 fps	4+4 port: 200 fps 16+16 port: 100 fps
Display Rate	CIF	NTSC	4-port: 120 fps 16-port: 120 fps	4+4 port: 240 fps 16+16 port: 240 fps
		PAL	4-port: 100 fps 16-port: 100 fps	4+4 port: 200 fps 16+16 port: 200 fps
	D1	NTSC	4-port: 120 fps 16-port: 60 fps	4+4 port: 240 fps 16+16 port: 120 fps
		PAL	4-port: 100 fps 16-port: 50 fps	4+4 port: 200 fps 16+16 port: 100 fps
Video Resolution	NTSC		704x480, 704x480 De-interlace, 640x480, 640x480 De-interlace, 352x240, 320x240	
	PAL		704x576, 704x576 De-interlace, 640x480, 640x480 De-interlace, 352x288, 320x240	
Video Compression Format			Geo MPEG4, Geo H264	
Audio Compression Format			AAC (16 kHz / 16 bit, 32 kHz / 16 bit)	
GV-NET/IO Card Support			Yes	
Dimensions (W x H)		PCI-E	120 x 82 mm / 4.7 x 3.2 in	
Installation Guide			<a href="#">GV-800B</a>	

Note:

- GV-800B is currently not compatible with VIA series and ATI series chipset motherboards.
- 8-port has the same recording rate and display rate as 16-port.
- Specifications are subject to change without notice.

## GV-1120B Combo Card



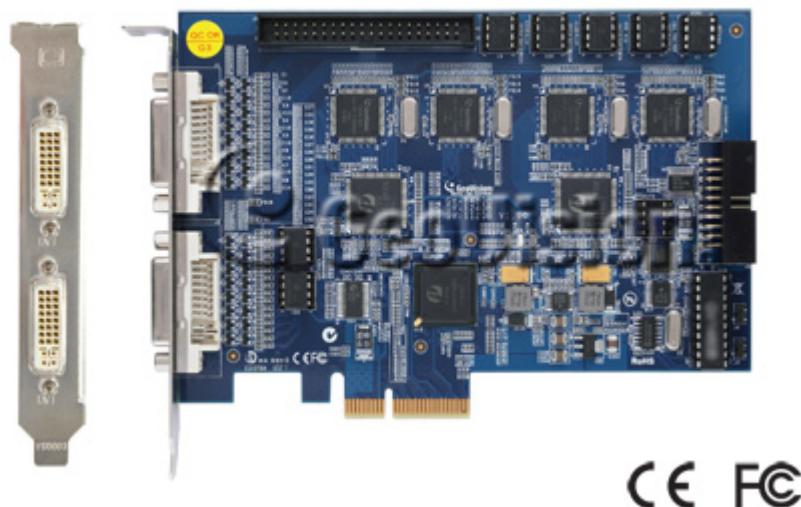
### Specifications

			GV-1120B	GV-1120B x 2
Interface			PCI-E (x4)	PCI-E (x4) x 2
Input Type			DVI	
Video Input			16 Cams	32 Cams
Audio Input			16 Channels	32 Channels
Recording Rate	CIF	NTSC	120 fps	240 fps
		PAL	100 fps	200 fps
	D1	NTSC	120 fps	240 fps
		PAL	100 fps	200 fps
Display Rate	CIF	NTSC	480 fps	960 fps
		PAL	400 fps	800 fps
	D1	NTSC	480 fps	960 fps
		PAL	400 fps	800 fps
Video Resolution	NTSC		704x480, 704x480 De-interlace, 640x480, 640x480 De-interlace, 352x240, 320x240	
	PAL		704x576, 704x576 De-interlace, 640x480, 640x480 De-interlace, 352x288, 320x240	
Video Compression Format			Geo MPEG4, Geo H264	
Audio Compression Format			AAC (16 kHz / 16 bit, 32 kHz / 16 bit)	
GV-Multi Quad Card Support			Yes	
GV-Loop Through Card Support			Yes	
<a href="#">GV-NET/IO Card</a> Support			Yes	
Dimensions (W x H)			156 x 111 mm / 6.14 x 4.37 in	
Installation Guide			<a href="#">GV-1120B</a>	

#### Note:

1. GV-1120B does not support the TV-Out function.
2. GV-1120B is currently not compatible with VIA series and ATI series chipset motherboards.
3. Specifications are subject to change without notice.

## GV-1480B Combo Card



### Specifications

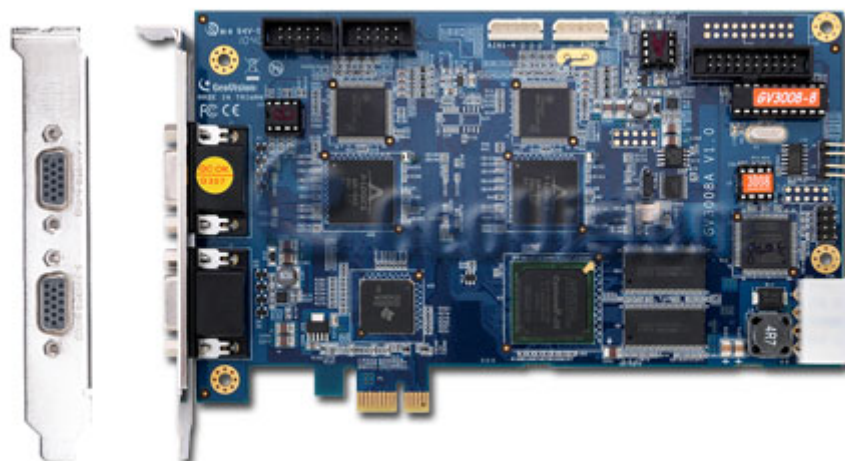
			GV-1240B	GV-1240B x 2
Interface			PCI-E (x4)	PCI-E (x4) x 2
Input Type			DVI	
Video Input			16 Cams	32 Cams
Audio Input			16 Channels	32 Channels
Recording Rate	CIF	NTSC	480 fps	960 fps
		PAL	400 fps	800 fps
	D1	NTSC	480 fps	960 fps
		PAL	400 fps	800 fps
Display Rate	CIF	NTSC	480 fps	960 fps
		PAL	400 fps	800 fps
	D1	NTSC	480 fps	960 fps
		PAL	400 fps	800 fps
Video Resolution	NTSC		704x480, 704x480 De-interlace, 640x480, 640x480 De-interlace, 352x240, 320x240	
	PAL		704x576, 704x576 De-interlace, 640x480, 640x480 De-interlace, 352x288, 320x240	
Video Compression Format			Geo MPEG4, Geo H264	
Audio Compression Format			AAC (16 kHz / 16 bit, 32 kHz / 16 bit)	
GV-Multi Quad Card Support			Yes	
GV-Loop Through Card Support			Yes	
<a href="#">GV-NET/IO Card</a> Support			Yes	
Dimensions (W x H)			156 x 111 mm / 6.14 x 4.37 in	
Installation Guide			<a href="#">GV-1480B</a>	

#### Note:

- GV-1480B does not support the TV-Out function.
- GV-1480B is currently not compatible with VIA series and ATI series chipset motherboards.
- Specifications are subject to change without notice.



## GV-3008 Hardware Compression Card



The GV-3008 Card provides up to 8 video and 8 audio channels, recording up to 240 / 200 fps (NTSC / PAL) in total with H.264 hardware compression. The GV-3008 Card provides the high-resolution live image with DSP Overlay. Even in multi views, the image on the largest division view can remain at the high-quality resolution.

### Specifications

		GV-3008	GV-3008 x 2
Interface		PCI-E (x1)	PCI-E (x1) x 2
Input Type		D-Type	D-Type
Video Input		8 Cams	16 Cams
Audio Input		8 Channels	16 Channels
Recording Rate (D1)	NTSC	240 fps	480 fps
	PAL	200 fps	400 fps
Display Rate	NTSC	240 fps	480 fps
	PAL	200 fps	400 fps
Video Resolution	NTSC	S/W 352 x 240	352 x 240
		H/W 704 x 480	704 x 480
	PAL	S/W 352 x 288	352 x 288
		H/W 704 x 576	704 x 576
Video Compression Format	S/W	Geo MPEG4, Geo H264	
	H/W	H.264	
Audio Format		16 kHz / 16-bit	
Bit Rate Range		2.5 M ~ 10 M	
GV-Net I/O Card Support		Yes	
GV-Multi Quad Card Support		Yes	
GV-Loop Through Card Support		Yes	
Hardware Watchdog		Yes	
Dimensions (W x H)		180 x 112 (mm) / 7.09 x 4.41 (in)	
Installation Guide		GV-3008	

#### Note:

- GV-3008 does not support the TV-Out function.
- GV-3008 is currently not compatible with VIA series, ATI series, NVIDIA series, Intel Sandy Bridge series, Intel Ivy Bridge series and Intel Haswell series chipset motherboards.



## GV-Center V2 Pro



### INTRODUCTION

The GV-Center V2 Pro is a professional version of Central Monitoring Station (CMS) software that can be installed in a CMS server. It brings multiple GeoVision GV-Systems together into an integrated interface, allowing the operator to manage several systems from one point of control. The GV-Center V2 Pro can manage 500 GV-Systems and receive video images from maximal 800 channels to its monitoring screen. On an alert condition, the GV-Center V2 Pro receives live images or event messages with attached video clips to correlate evidence of activity and instantly brings operator's attention.

### BENEFITS OF USING GV-CENTER V2 PRO

#### ► Cost-effective

- Uses GV-Center V2 Pro software on current GV-System
- Saves cost compared to traditional matrix systems or alarm monitoring services

#### ► Time-effective

- Flexible control and management to 500 GV-Systems
- Helps security operator verify the nature of the alarm on the spot
- Fast to handle alert notifications

#### ► Relatively small manpower requirements

- Raises the effectiveness of security personnel by bringing potential threats to their attention
- Effectively reduces false alarms

#### ► Prescription for business security

- Panic-button support offers effective crime prevention for convenience store, gas station, and restaurant security

#### ► Strong Authentication with enhanced network security

- Utilized RSA encryption to protect the data security

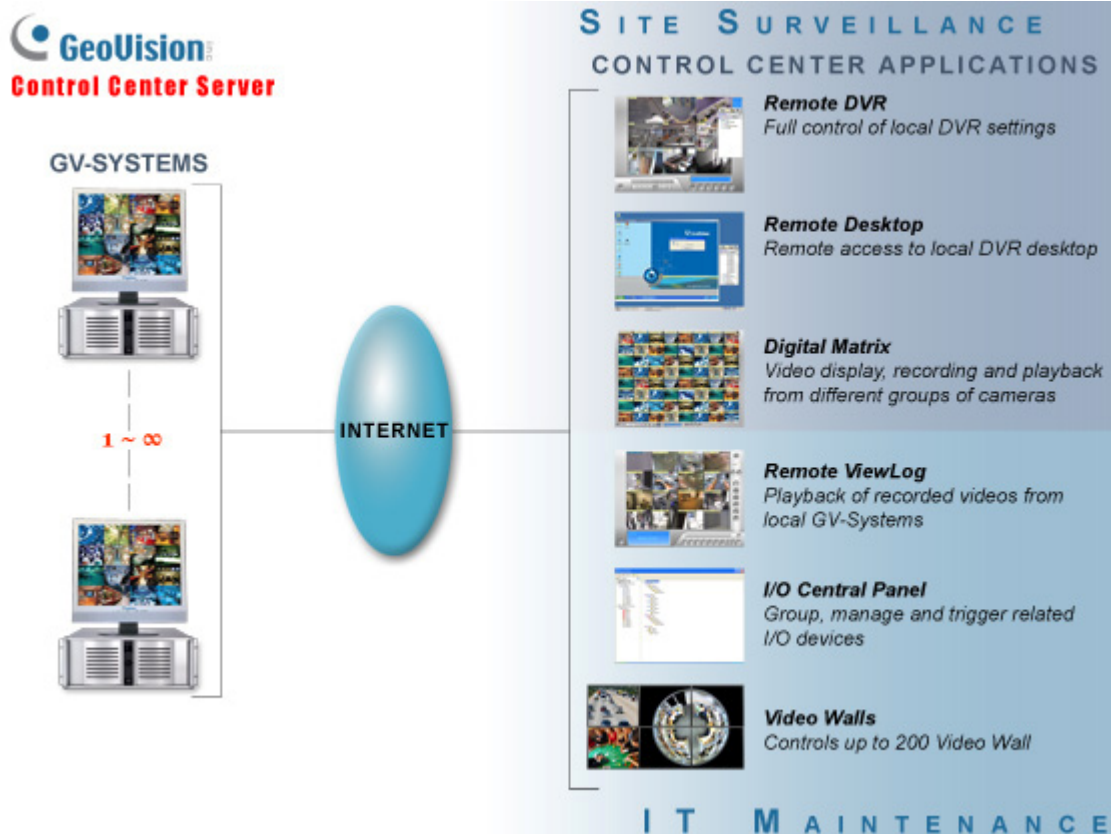
# GV-Control Center

Handy Tool  
For Security  
Control Center  
Operations



## INTRODUCTION

The GV-Control Center software is an integrated security management system that provides a handy tool to maintain central monitoring station operation. GV-Control Center introduces a comprehensive solution that provides center operators with time efficiency to control networked GV-Systems and I/O devices. With GV-Control Center, multiple GV-Systems and I/O devices within a DVR server farm can be managed and maintained efficiently to enhance their monitoring performance and ensure smooth operation.

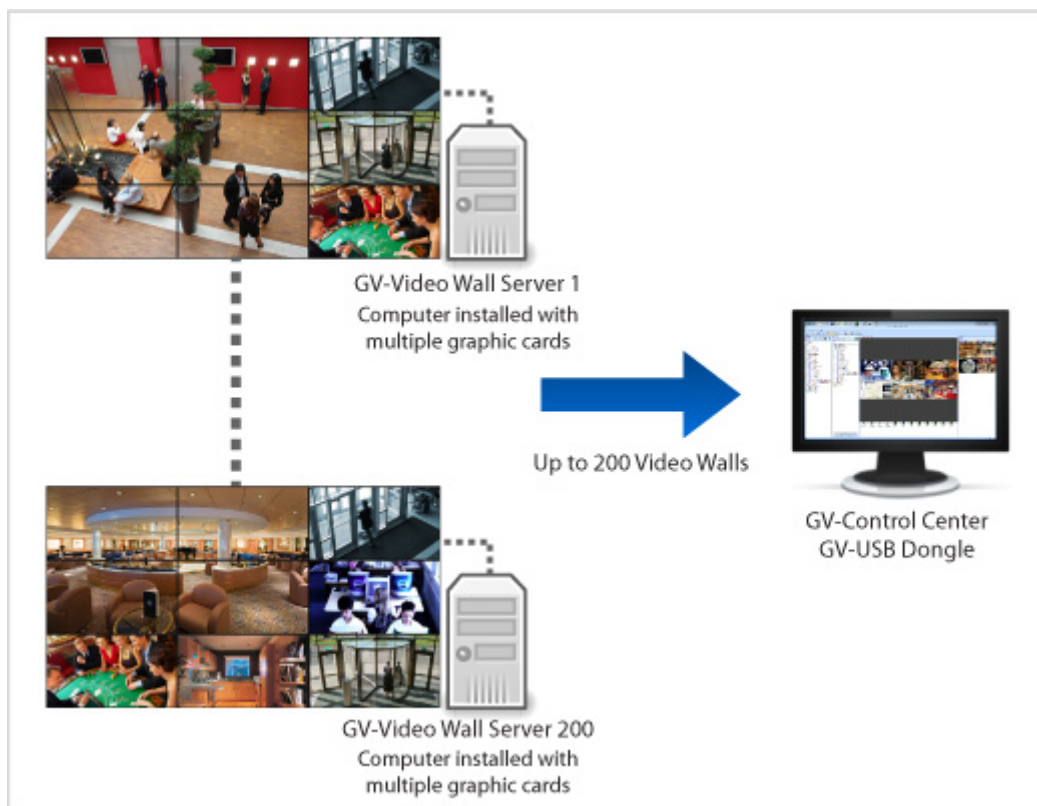


## GV-Video Wall



### INTRODUCTION

With GV-Control Center, you can remotely configure and manage up to 200 Video Walls, each with a different layout. A video wall is an establishment of multiple monitors on a server, which is a PC installed with multiple graphic cards. Depending on the incoming IP sources, you can display actual-size images on the Video Wall.

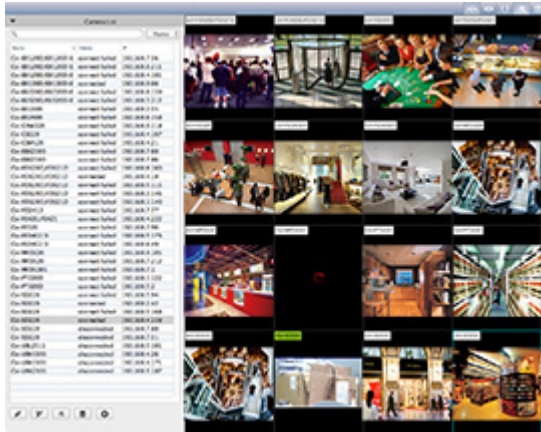


### Features

On each Video Wall, you can:

- display up to 288 IP channels
- display actual size IP images
- freely adjust the size and position of each channel, whether it be within or across monitors
- display up to 16 zoomed channels with Zoom Window
- display up to 16 Scan Window, each is capable of displaying up to 32 channels in turn, at customizable time interval
- display up to 16 web pages with Web Window
- play back up to 16 videos with Media Window
- play back up to 16 videos with Remote ViewLog Window
- display up to 288 channels of customized view region of remote monitors
- display live views enabled from Remote E-Map

## GV-Edge Recording Manager (Mac Version)



### INTRODUCTION

GV-Edge Recording Manager is a tool designed for recording management of remote GV-IP Cameras and GV-Target Cameras. It is an integrated interface from which you can assess live view, assign recording to NAS servers, enable recording, play back videos and view storage space without visiting each host's Web interface. Any connection with hosts can be disabled without affecting or stopping the hosts' normal functioning.

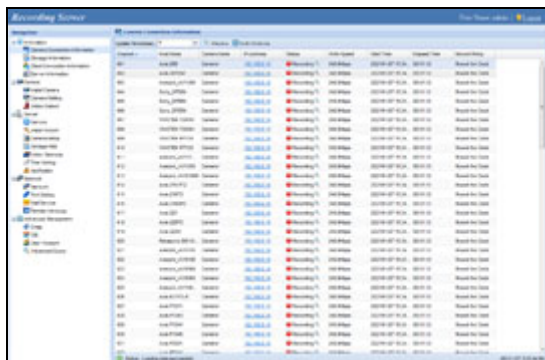
GV-Edge Recording Manager also supports live view display and video playback of hosts connected to GV-Video Server, GV-VMS and GV-Recording Server.



**Note:** GV-Recording Server is not supported for playback at GV-Edge Recording Manager.



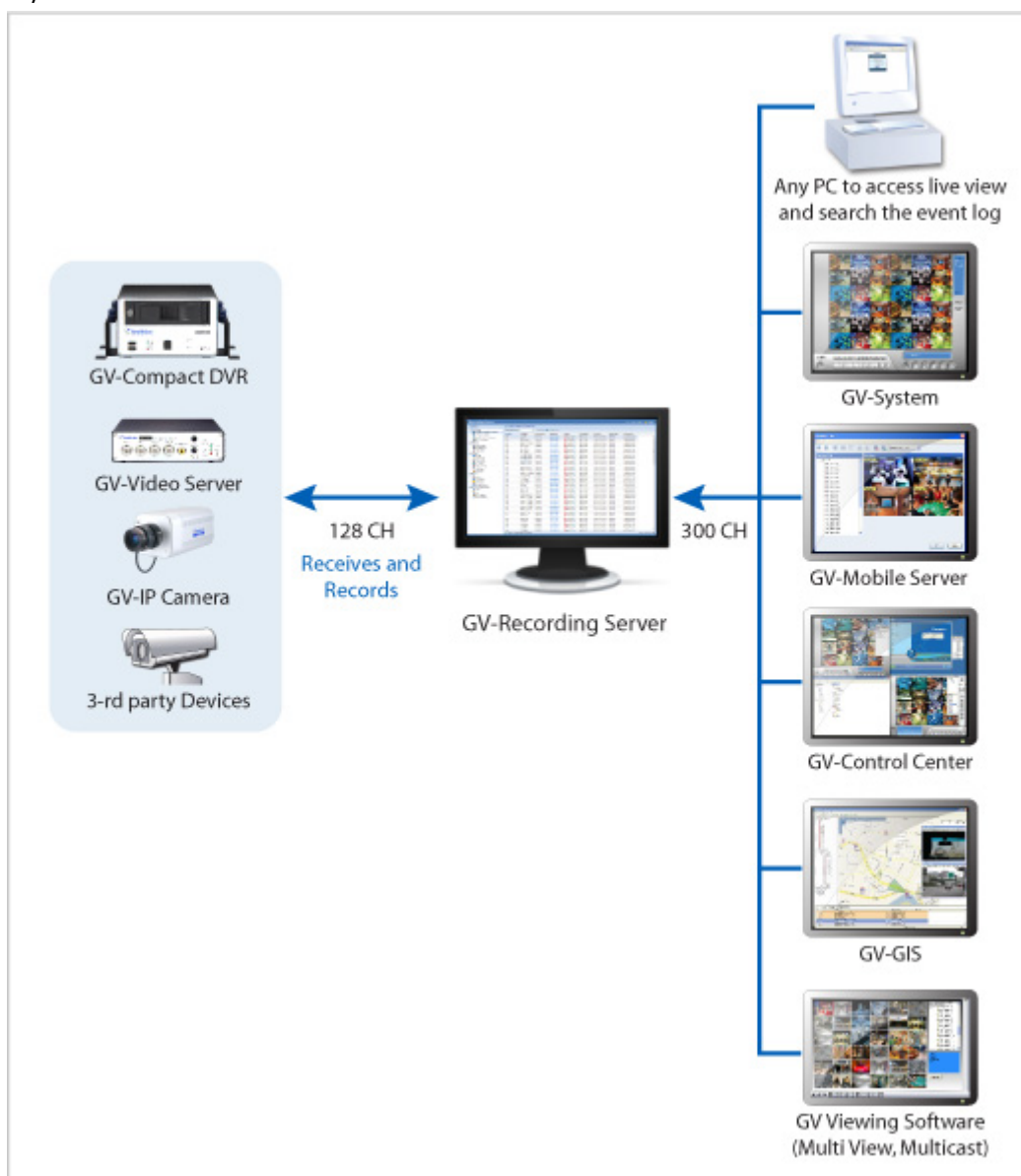
## GV-Recording Server



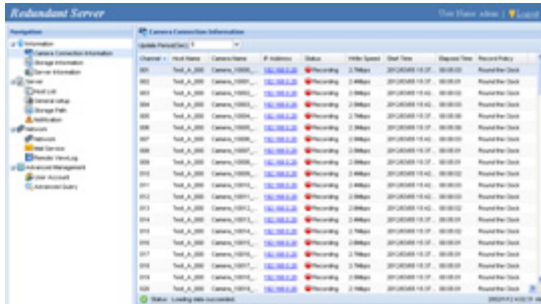
### INTRODUCTION

The GV-Recording Server is a video streaming server designed for large-scale video surveillance deployments. It can receive and record up to 128 channels from various IP video devices. Through an intuitive Web interface, each IP camera can be configured to record video continuously, upon motion detection, upon I/O trigger or according to a schedule.

In addition, it can simultaneously distribute up to 300 channels to its clients which include GV-System (DVR/NVR system), GV-GIS (geographic information system), GV-Mobile Server, GV-Control Center (central monitoring system) and Multi View (viewing software). Using the GV-Recording Server, the desired frame rates can be reached while the CPU loading and the bandwidth usage of IP video devices are significantly reduced.

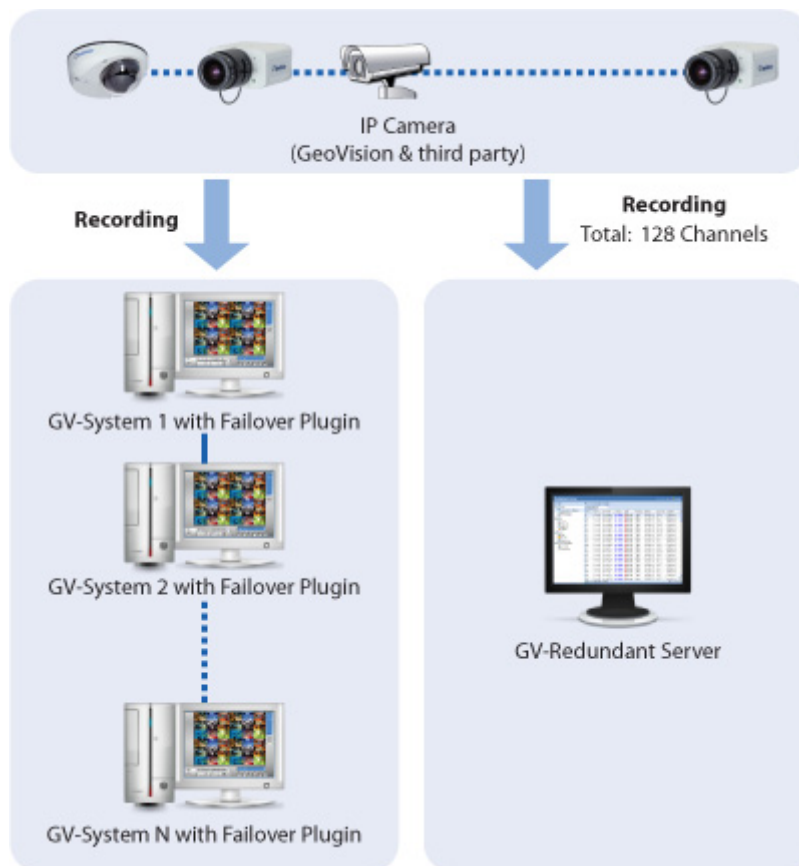


## GV-Redundant Server



### INTRODUCTION

The GV-Redundant Server is a video backup server designed for large-scale video surveillance deployments. It can record up to 128 IP channels of the connected GV-System hosts. As its name suggests, the GV-Redundant Server keeps an extra copy of IP channels from GV-System hosts.



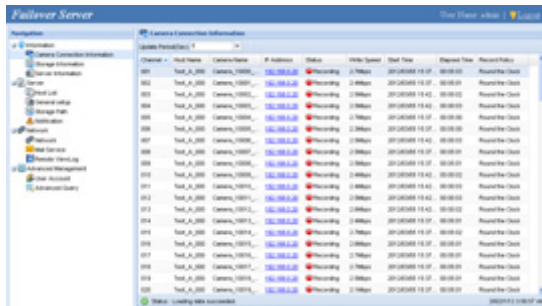
Note: The GV-Redundant Server does not support backup of analog cameras.

### Features

- Record up to 128 IP channels simultaneously
- Support round-the-clock recording
- Video playback using Remote ViewLog
- Support for remote configuration and monitoring of GV-Redundant Server using Internet Explorer, Firefox, Google Chrome and Safari
- Support 6 third-party IP device brands (Arecont Vision, Axis, HikVision, Panasonic, Sony, VIVOTEK)
- Support for ONVIF, PSIA and RTSP protocols
- Support for 31 languages

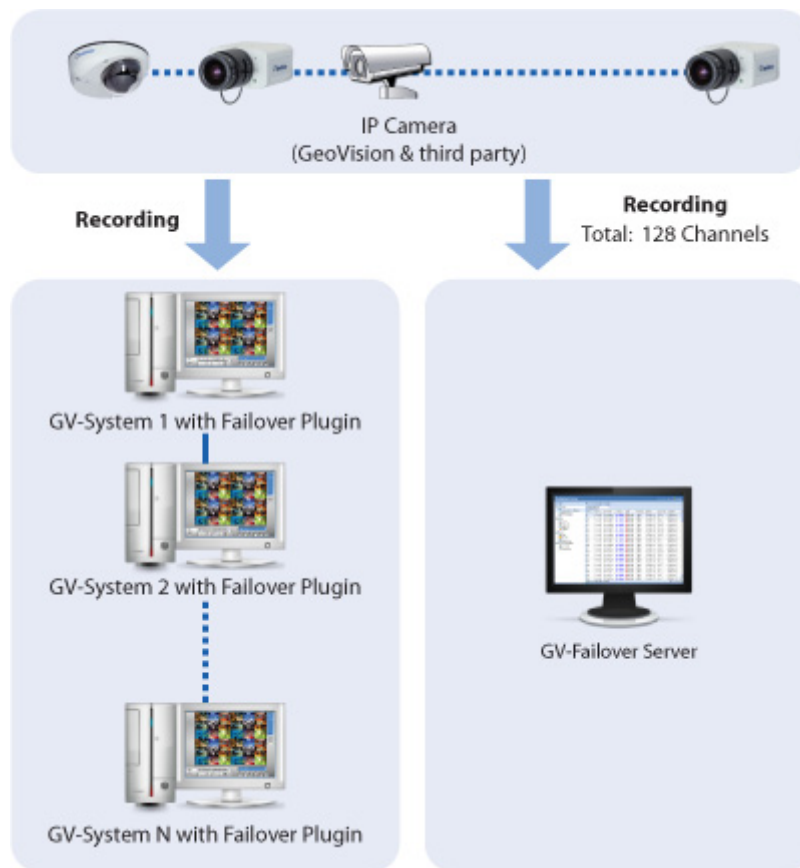


## GV-Failover Server



### INTRODUCTION

GV-Failover Server is a video backup server that records up to 128 IP streams from hosts GV-Systems when any of the following conditions occur: (1) when the host GV-System starts up without monitoring; (2) when file recycling fails; (3) when there is an error in the hard drive; (4) when there is an error with the Failover Plugin program.

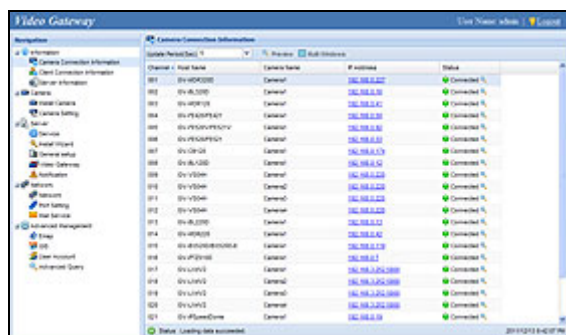


**Note:** The GV-Failover Server does not support backup of analog cameras.

### Features

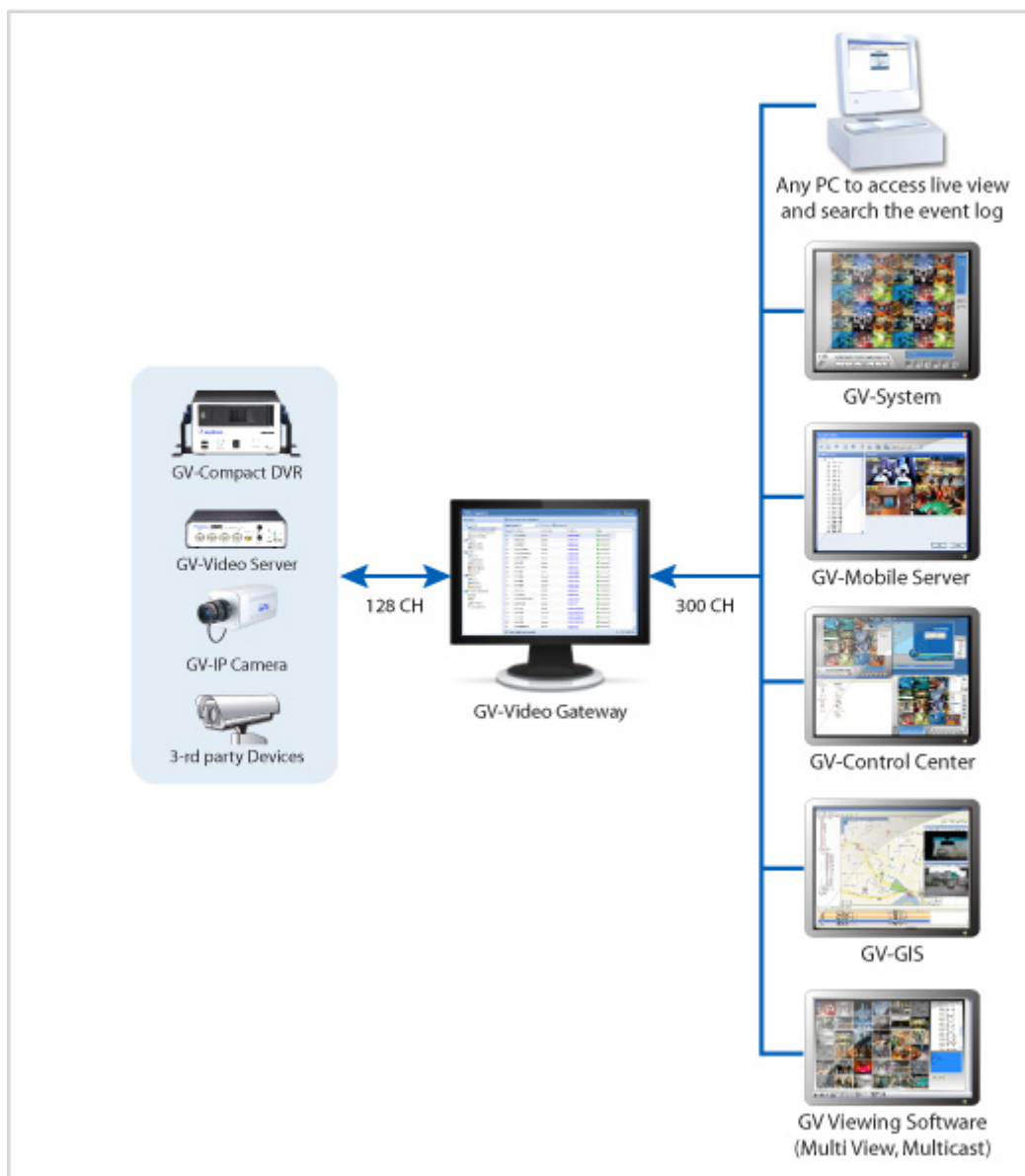
- Record up to 128 IP channels simultaneously
- Support round-the-clock recording
- Video playback using Remote ViewLog
- Support for remote configuration and monitoring of GV-Failover Server using Internet Explorer, Firefox, Google Chrome and Safari
- Support 6 third-party IP device brands (Arecont Vision, Axis, HikVision, Panasonic, Sony, VIVOTEK)
- Support for ONVIF, PSIA and RTSP protocols
- Support for 31 languages

## GV-Video Gateway



## INTRODUCTION

The GV-Video Gateway is a video streaming server designed for large-scale video surveillance deployments. It can receive up to 128 IP cameras from various IP video devices. In addition, it can simultaneously distribute up to 300 channels to its clients which include GV-System (DVR/NVR system), GV-GIS (geographic information system), GV-Mobile Server, GV-Control Center (central monitoring system), and Multi View (viewing software). Using the GV-Video Gateway, the desired frame rates can be reached while the CPU loading and the bandwidth usage of IP video devices are significantly reduced.



**Note:** The arrows in the diagram indicate the direction of the connections.

## GV-VMS



### INTRODUCTION

GV-VMS is a comprehensive video management system that records up to 64 channels of GeoVision and/or third-party IP devices. The live view and playback layout can be easily adjusted with the intuitive drag-and-drop function. GV-VMS comes with a variety of intelligent video analytics to offer precise monitoring and to reduce the need for manual supervision. The built-in Webcam Server allows users to remotely access live view and recordings from anywhere using Web browsers, mobile app and Remote ViewLog. Compatibility with GV-CMS (GeoVision Central Monitoring Station) and interoperability with a wide selection of third party IP cameras through ONVIF and PSIA make GV-VMS a versatile and effective surveillance solution.

- Customizable layout for live view and playback with drag-and-drop support
- Support for multi-monitor display
- Support for Microsoft SQL and Access database type
- Support for Service Mode
- Support for up to 64 channels
- Support for over 500 IP camera models
- Auto search for IP cameras
- Support for H.264 and MJPEG codec
- Support for resolution from CIF to megapixels
- Smart Dual Streaming for monitoring and recording
- Support for GPU decoding and GPU fisheye dewarping
- Intelligent video analytics
- PIP and Focus View functions
- Multi-level password management and support for authentication server
- Smart timeline playback and instant playback
- Support for e-mail notification upon events
- I/O and alarm management with e-map and visual automation
- Remote viewing and playback using iOS/Android devices, Web browsers, and GV-Edge Recording Manager
- Centralized management with GV-CMS
- Fisheye 360 degree de-warping for live view and playback

## GV-IO Box 8 Ports



The GV-IO Box 8 provides 8 inputs and 8 relay outputs. It supports both DC and AC output voltages, and provides a USB port for PC connection.

Specifications				
OS Supported	32-bit		Windows XP / Vista / 7 / 8 / Server 2008	
	64-bit		Windows 7 / 8 / Server 2008 R2 / Server 2012	
Compatible S/W			GV-System version 8.2 or above	
Input	Input		8	
	Input Signal		Dry Contact	
			Wet Contact, 9-30V AC/DC	
Communication	Relay Output		8	
	Relay Status		Normal open	
	Relay Capacitance	USB Connection		30 VDC, 3A
		RS-232 Connection		125 / 250 VAC, 3A
				30 VDC, 3A
Ethernet			RJ-45, 10/100 Mbps (Optional)	
DC IN			DC 12V, 1A	
Address			0-9, A-F	
Terminal Resistance			120 ohm	
Environmental Conditions			0 ~ 50 °C / 32 ~ 122 °F 5% ~ 95% (non-condensing)	
Dimensions (W x H x D)			135 x 28 x 145 (mm) / 5.31x 1.10 x 5.70 (in)	
Installation Guide			<a href="#">GV-IO Box 8</a>	

**Note:** All specifications are subject to change without notice.

## GeoVision, GV-COM, RS-232 / RS-485 COM Port



### Item #: GV-COM

Availability: In stock

Model #:GV-COM

List Price:\$89.00

Our Price: \$56.00

### Quick Overview

GeoVision Accessory, GV-COM, RS-232/RS-485 COM port from your GeoVision Digital Video Recorder's USB port.

### Details

Serial Interface	RS-232	Signal: DCD, RxD, TxD, DTR, GND, DSR, RTS, CTS Connector: DB9 Male
	RS-485	Signal: D+, D Connector: Terminal Block
	16 KV ESD for All Signals	Serial Line Protection
USB	Compliance	USB 1.1, 1.0 USB 2.0 Backward Compatible
	Speed	Full speed 12 Mbps
Communication Parameters	Parity	None, Even, Odd
	Data Bit	7, 8
	Stop Bit	1 (default), 2
	Flow Control	RTS/CTS, XON/XOFF
	Speed	600 bps to 115,200 bps
Environmental Conditions	Operation Temperature	0C~55C
	Humidity	5%~95% (Non-Condensing)
Dimensions	103 (W) x 32 (H) x 64 (D) mm	
Installation Guide	<a href="#">GV-COM</a>	

### Specifications

## GV-NET/IO Card V3.2



The GV-NET/IO card provides 4 inputs and 4 relay outputs. It supports both DC and AC output voltages and provides a USB port as well.

Specifications			
OS Supported	32-bit		Windows XP / Vista / 7 / 8 / Server 2008
	64-bit		Windows 7 / 8 / Server 2008 / Server 2012
Input	Input		4
	Input Signal		Dry-Contact
			Wet-Contact : 9~30V AC/DC
Output	Relay Output		4
	Relay Status		Normal Open
	Relay	USB Connection	30V DC, 3A
	Capacitance	RS-232 Connection	125 / 250V AC, 3A
			30V DC, 3A
Interface			RJ-11 to DB9
			RJ-11 to USB
			3-pin internal USB to internal USB
Mode Switch	I/O Box Mode		Without GV-Video Capture Card
	NET/IO Card Mode		With GV-Video Capture Card
Address			1-4
Communication			RS-485, USB, RS-232
Environmental Conditions			0~50℃ / 32~122°F , 5%~95% (non-condensing)
Dimensions (W x H)			90 x 99 ( mm ) / 3.90 x 3.54 (in)
Installation Guide			<a href="#">GV-NET/IO Card V3.2</a>

**Note:** All specifications are subject to change without notice.



## GV-Joystick



The GV-Joystick provides full control of the PTZ devices connected to the GV-System. It facilitates functions such as tilt, pan, or zoom to achieve precision surveillance. When combined with the GV-KeyBoard, it empowers GV-System operations.

## Specifications

OS Supported	32-bit	Windows XP / Windows Vista / Windows 7 / Windows Server 2008
	64-bit	Windows 7 / Windows Server 2008
Communication	USB	USB 2.0 / Type A Male to Type B Male
	RJ-45	Connects to GV-KeyBoard
Power	DC IN	DC 5V 50mA
Environmental Conditions	Operation Temperature	0~50°C / 32°F ~122°F
	Humidity	5%~95% (non-condensing)
Dimensions (W x H x D)		160 x 90 x 118 mm / 6.30 x 3.54 x 4.65 in
Installation Guide		<a href="#">GV-Joystick</a>

**Note:** All specifications are subject to change without notice.

## GV-Keyboard V3 for GV-Control Center



The GV-Keyboard V3 is designed to program and operate GV-Control Center, and it can also be connected with PTZ cameras directly for PTZ control.

### Key Features

- A Keyboard can control up to 16 GV-Systems / 16 GV-Control Centers.
- Multiple Keyboards can work with up to 8 monitors for Matrix View and ViewLog applications.
- A Keyboard can directly set up and control up to 32 PTZ cameras.

### Specifications

OS Supported	32-bit	Windows XP / Vista / 7 / 8 / Server 2008
	64-bit	Windows 7 / 8 / Server 2008 R2 / Server 2012
System Supported	GV-Control Center V8.5 or later	
Output	USB	USB 2.0
	DVR/RS-485+ DVR/RS-485-	Connects to GV-NET card, GV-NET/IO card, GV-Hub V2 or GV-COM V2
	PTZ/RS-485+ PTZ/RS-485-	Connects to PTZ cameras
	PTZ/RS-422+ PTZ/RS-422-	
Communication	RS-485	9,600 bps (between the keyboard and GV-Control Center)
	RS-485 / 422	2,400 ~ 115,200 bps (between the keyboard and PTZ cameras)
Power	DC In	DC 12V 1A
Environmental Conditions	Operation Temperature	0~50°C / 32 ~122°F
	Humidity	5%~95% (non-condensing)
Dimensions (L x W x H)	161 x 300 x 45 mm / 6.34 x 11.81 x 1.77 in	
Quick Strat Guide	<a href="#">GV-Keyboard V3</a>	
Model Number	GV-Keyboard (CMS) V3.00	

#### Note:

1. Currently, GV-Keyboard V3 does not support embedded operating systems.
2. All specifications are subject to change without notice.

## GV-NET Card V3.2



The GV-NET Card V3.2 is a RS-485 / RS-232 interface converter that can be installed inside a PC. It also supports connection via USB port.

Specifications		
OS Supported	32-bit	Windows XP / Vista / 7 / 8 / Server 2008
	64-bit	Windows 7 / 8 / Server 2008 / Server 2012
Interface		RJ-11 to DB9 (RS-232)
		RJ-11 to USB
		3-pin internal USB to internal USB
		RS-485+ / RS-485-
Communication		RS-485 1,200~115,200 bps; USB
Environmental Conditions		0~50°C / 32~122°F, 5%~95% (non-condensing)
Dimensions (W x H)		97 x 90 ( mm ) / 3.82 x 3.54 (in)
Installation Guide		<a href="#">GV-NET Card V3.2</a>

## Ordering Info

Item No. (Sales Part No.)	Description
400-NETCR-000	GV-NET Card V3.2

**Note:** All specifications are subject to change without notice.

## GV- IR Remote Control



Controls GV-System with the Remote Control.

### Specifications

OS Supported	32-bit	Windows XP / Windows Vista / Windows 7 / Windows Server 2008
	64-bit	Windows 7 / Windows Server 2008 R2
Operation Distance	7 meters / 22.97 ft	
Receiving Angle	± 30 degrees	
Frequency	38 KHz	
Power	R03 size AAA / 1.5V Battery x 2 units (Remote Control)	
Dimensions(W x H x D)	53 x 28 x 185 mm / 2.09 x 1.10 x 7.28 in (Remote Control)	
Installation Guide	<a href="#">GV-IR Remote Control</a>	

**Note:** All specifications are subject to change without notice.

## GV-CS1320 2MP H.264 Camera Access Controller with a built-in Reader



### Introduction

GV-CS1320 is an access controller with a built-in 2 MP camera and 13.56 MHz reader.

GV-CS1320 recognizes identification cards and grants access to up to 40,000 users accordingly. With the integration of the wide angle camera, the Card and Face Mode enables GV-CS1320 to perform face detection together with card verification before access can be granted.

Visitors requesting entry permits can also use the bell button (touch pad) to be granted access. When GV-CS1320 is connected to GV-ASManager over the network, GV-ASNotify generates a notification message and snapshot whenever the bell button (touch pad) is activated. The operator can use GV-ASNotify to watch live view and communicate with the surveillance site via the microphone and speaker functions.

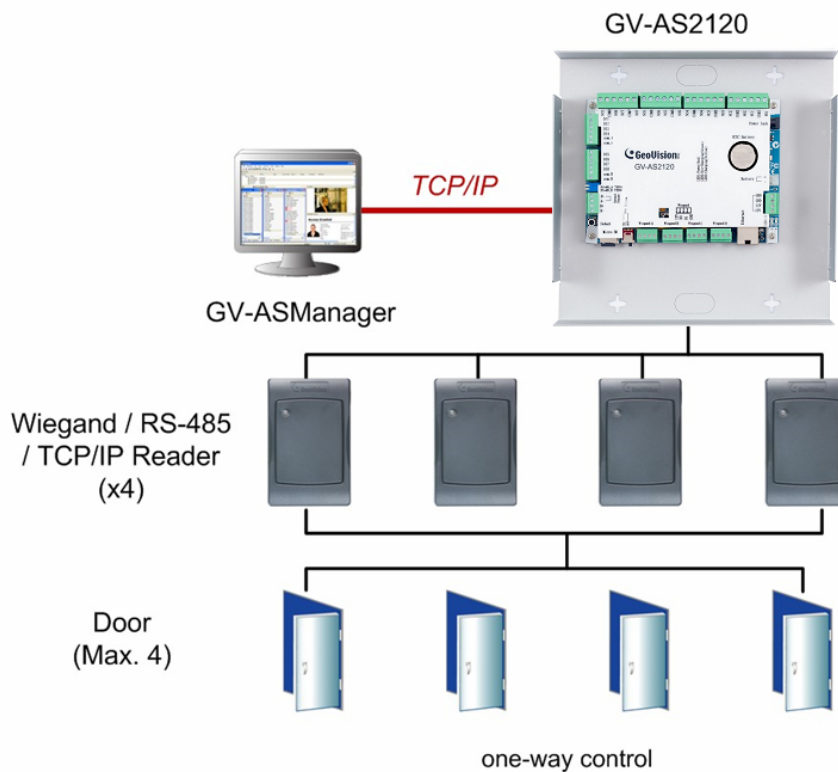
The all-in-one solution eliminates the need of installing and maintaining a separate camera in addition to the card reader and a door entry system.

## GV-AS2120 IP Control Panel



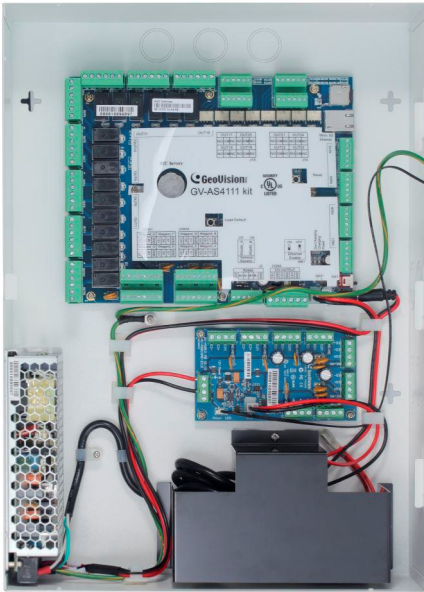
### KEY FEATURES

- One-way control: 4 doors
- Two-way control: 2 doors by Wiegand only, 4 doors by Wiegand, RS-485 and network
- 4 Wiegand card readers of 26 to 64 bits
- 8 GV-Readers and GV-GF Fingerprint Readers through RS-485 connection
- Built-in 8 digital inputs and 8 relay outputs
- Suitable for controlling doors, parking gates and access to elevator call buttons
- Support for tampering alarm
- DC 12V, 3A / PoE+ (IEEE 802.3at)





## GV-AS4111Kit



GV-AS4111 Kit is a cabinet containing a GV-AS4111, a power adapter board, a power supply and a casing for backup battery. The power supply provides power to GV-AS4111 Kit and up to 8 output devices (12V, 0.5A per device).

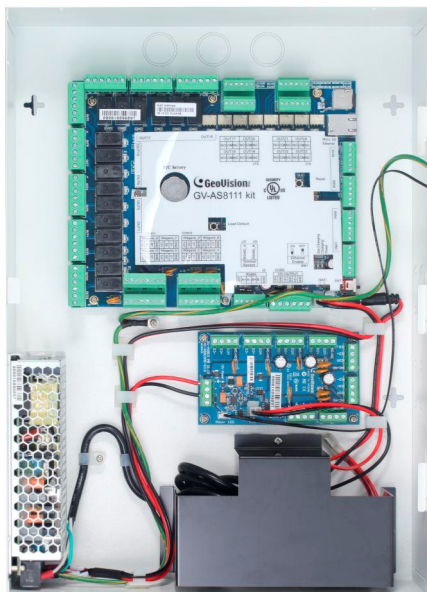
### Key Features

- One-way control: 4 doors
- Two-way control: 4 doors by Wiegand / RS-485 / Network
- Support 8 Wiegand card readers of 26 to 64 bits
- Support 8 GV-Readers through RS-485 connection / Network
- Built-in 16 digital inputs and 24 relay outputs
- Suitable for doors, parking gates and access to elevator call buttons
- Support for tampering alarm

### Packing List

- GV-AS4111 Kit (US standard or EU standard)
- Iron box key
- Iron box screw x 6
- Self-adhesive cable tie mounts x 6
- Battery wiring
- Micro SD Card 2 GB
- Software CD
- Warranty Card

## GV-AS8111 Kit



GV-AS8111 Kit is a cabinet containing a GV-AS8111, a power adapter board, a power supply and a casing for backup battery. The power supply provides power to GV-AS8111 Kit and up to 8 output devices (12V, 0.5A per device).

### Key Features

- One-way control: 8 doors
- Two-way control:
  - 4 doors by Wiegand only;
  - 8 doors by RS-485 / network;
  - 8 doors with max 4 doors by Wiegand and other doors by RS-485 / network
- Support 8 Wiegand card readers of 26 to 64 bits
- Support 16 GV-Readers through RS-485 / network
- Built-in 16 digital inputs and 24 relay outputs
- Suitable for doors, parking gates and access to elevator call buttons
- Support for tampering alarm

### Packing List

- GV-AS 8111 Kit (US standard or EU standard)
- Iron box key
- Iron box screw x 6
- Self-adhesive cable tie mounts x 6
- Battery wiring
- Micro SD Card 2 GB
- Software CD
- Warranty Card

## GV-EV48

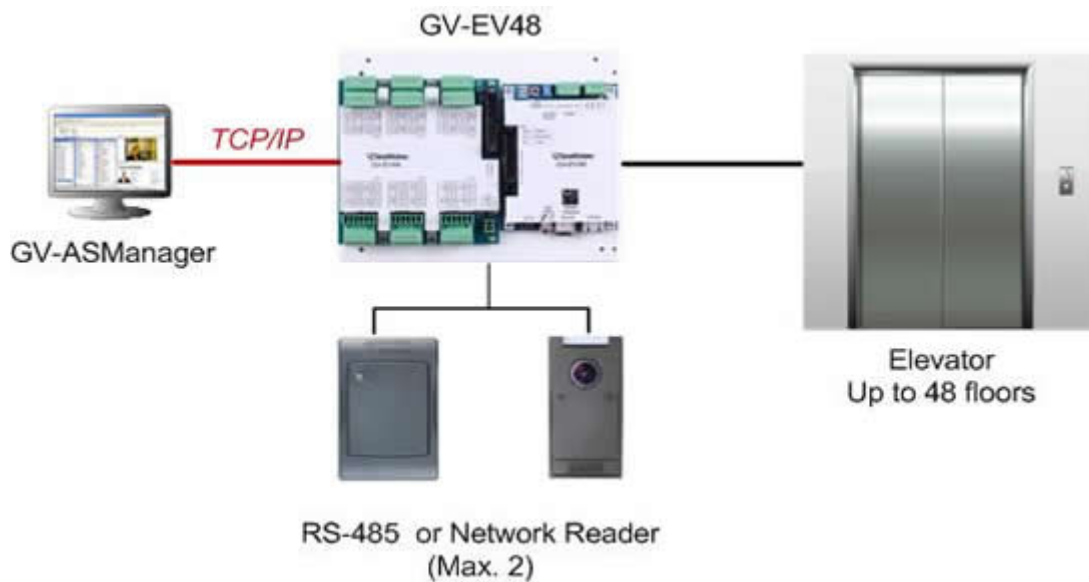


### Introduction

GV-EV48 is an elevator controller designed to control access of 1 elevator with a maximum of 48 floors. Up to 2 GV-Readers / GV-GF Fingerprint Readers can be connected to GV-EV48 using RS-485 connection and network connection. GV-EV48 can recognize identification cards and grant access to the authorized floors only.

### Key Features

- Grant access to specific elevator floors using access cards, card's PIN code or fingerprint
- GV-EV48 – 24 Floors: Built-in 24 relay outputs to support up to 24 elevator floors
- GV-EV48 – 48 Floors: Built-in 48 relay outputs to support up to 48 elevator floors
- Support up to 2 GV-Readers / GV-GF Fingerprint Readers through network connection and RS-485 connection



## GV-FR2020 Face Recognition Reader



The face recognition reader can work with GV-AS Controller and GV-ASManager to create a complete access control system. Two types of operation modes are supported: Face Recognition or Card.

### KEY FEATURES

- 2.4" TFT color screen, 320 x 240 pixel display
- Special stereo dual sensors (Lens and IR sensor)
- Up to 80 cm (31.50 in) detection range
- 2000 face capacity
- ≤ 0.5 second verification speed
- 16-bit Hi-Fi voice and sound indication
- 12V DC, 2 A (only for standalone operation) / PoE+ (IEEE 802.3at)
- Built-in 13.56 MHz Reader
- Work with GV-AS21 / 41 / 81 series Controller and GV-ASManager
- Can work as a standalone reader
- Two (2) access modes for the integration with GeoVision controller and software: Face Recognition mode or Card mode
- Anti-Passback (APB) support
- CE, FCC compliant

### SPECIFICATIONS

Hardware	
Application	Indoor use only
LCD Display	2.4" TFT color screen, 320 x 240 pixel
CPU	1G MHz
Ambient Light	0-50000 lux
Image Sensor	Special Stereo Dual Sensors (Lens and IR sensor)

## GV-GF1921/GF1922 GF Fingerprint Reader





The fingerprint reader can work with GV-AS / GV-EV Controller and GV-ASManager to create a complete access control system. Three types of operation modes are supported: Card + Fingerprint, Fingerprint Only and Card Only.

### KEY FEATURES

- Work with GV-AS / GV-EV Controller and GV-ASManager
- Can be a standalone fingerprint reader
- Three types of access modes: card only, fingerprint only and card plus fingerprint
- Fingerprint templates stored on the user card
- TCP/IP interface (WAN)

### SPECIFICATIONS

Models	GV-GF1921	GV-GF1922
		
Application	Indoor use only	
Communication Interface	TCP/IP (10/100 Mps Ethernet, WAN)	
Sensor	Capacitive	Optical
Sensing Area (H x W)	18 x 13 mm (0.71 x 0.51 in)	20 x 17 mm (0.79 x 0.67 in)
Operation Mode	Fingerprint Only, Card + Fingerprint, Card Only	
Number of Fingerprints Stored	1,900 (for Fingerprint Only mode)	
Supported Card	ISO14443A (MIFARE DESFire, MIFARE Plus and MIFARE Classic), 13.56 MHz	
Output	DC 30V, 0.3A	
Input	2 Ports, dry-contact	
Power	DC 12V, Max 250mA	
Operating Temperature	0~50° C (32~122° F)	
Humidity	10%~90%	
Dimensions (H x W x D)	48 x 59 x 138 mm (1.89 x 2.32 x 5.43 in)	
Weight	130 g (0.29 lb)	160 g (0.35 lb)
Certification	CE, FCC	

## GV-R1352 Card Reader



The GV-R1352 is a card reader designed to recognize identification cards. Featured with the Wiegand and RS-485 outputs, the unit can be connected to any standard access control panel. GV-R1352 comes with a weather sealed and IP66 compliant housing for outdoor use.

### KEY FEATURES

- Card reader with weather-proof and IP66-compliant housing
- Wiegand interface supported
- RS-485 output: 9,600 bps, connect up to 8 GV-R1352 units
- 13.56 MHz for ISO14443A (Mifare DESFire, Mifare Plus and Mifare Classic)

### SPECIFICATIONS

CPU	8 bit microprocessor
Frequency	13.56 MHz for ISO14443A (Mifare DESFire, Mifare Plus and Mifare Classic)
Wiegand Interface	Wiegand 26 / 34 bit, distance 30 m / 98.43 ft
RS-485	9,600 bps, connect up to 8 GV-R1352 units
Power	DC 7.5V~12V
LED	Red, Green and Blue LED
Beeper	Buzzer
Color	Black
Operating Temperature	-20 °C ~ 60 °C / -4 °F ~ 140 °F
Operating Humidity	10 ~ 90% RH (non-condensing)
Dimensions (W x H x D)	65.80 x 115.6 x 20.5 mm / 4.6 x 2.6 x 0.8 in
Weight	120 g / 0.26 lb
Certification	IP66, CE, FCC, RoHS

### The number of GV-R1352 supported by GV-AS Controllers

GV-AS Controller Model	GV-R1352 Interface	
	Wiegand	RS-485
GV-AS100	1	1
GV-AS110 / GV-AS120	1	Not support
GV-AS100 / GV-AS110 / GV-AS120 with GV-ASBOX	2	4
GV-AS100 / GV-AS110 / GV-AS120 with GV-ASNet	Not Support	2
GV-AS210	4	8
GV-AS400	8	8
GV-AS410 / AS810	8	8

### Options

GV-AS ID Card & GV-AS ID Tag	GV-AS ID Cards and GV-AS ID Tags are ideal for business and residential environment, where access control is important for security reasons. 125 kHz and 13.56 MHz cards and tags are available.
------------------------------	--



## GV-RK1352 Card Reader



The GV-RK1352 is a card reader with keypad, designed to recognize PIN codes, identification cards or both. Featured with the Wiegand and RS-485 outputs, the unit can be connected to any standard access control panel. GV-RK1352 comes with a weather sealed and IP66 compliant housing for outdoor use.

### KEY FEATURES

- Card reader with keypad
- Identification card and PIN code recognition
- Weather-proof and IP66-compliant housing
- RS-485 output: 9,600 bps, connect up to 8 GV-RK1352 units
- 13.56 MHz for ISO14443A (Mifare DESFire, Mifare Plus and Mifare Class)

### SPECIFICATIONS

CPU	8 bit microprocessor
Frequency	13.56 MHz for ISO14443A (Mifare DESFire, Mifare Plus and Mifare Class)
Wiegand Interface	Wiegand 26 / 34 bit, distance 30 m / 98.43 ft
RS-485	9,600 bps, connect up to 8 GV-RK1352 units
Power	DC 7.5V~12V
LED	Red, Green and Blue LED
Beeper	Buzzer
Color	Black
Operating Temperature	-20 °C ~ 60 °C / -4 °F ~ 140 °F
Operating Humidity	10 ~ 90% RH (non-condensing)
Dimensions (W x H x D)	95 x 108 x 23 mm / 3.74 x 4.25 x 0.91 in
Weight	260 g / 0.57 lb
Certification	IP66, CE, FCC, RoHS
Installation Guide	<a href="#">GV-RK1352 Card Reader</a>

### The number of GV-RK1352 supported by GV-AS Controllers

GV-AS Controller Model	GV-RK1352 Interface	
	Wiegand	RS-485
GV-AS100	1	1
GV-AS110 / GV-AS120	1	Not support
GV-AS100 / GV-AS110 / GV-AS120 with GV-ASBOX	2	4
GV-AS100 / GV-AS110 / GV-AS120 with GV-ASNet	Not Support	2
GV-AS400	8	8

## GV-PCR310 Enrollment Reader



The GV-PCR310 is a USB card reader designed to assist with card enrollment to GV-ASManager. It reads and transfers the identification data of a detected card to GV-ASManager. The user can conveniently establish user accounts on GV-ASManager by inserting the cards at the GV-PCR310 Enrollment Reader.

### SPECIFICATIONS

System Requirements		
OS	32-bit	Windows XP / Vista / 7 / 8 / Server 2008
	64-bit	Windows 7 / 8 / Server 2008 R2 / Server 2012
GV-ASManager Version		V4.1 or later
Operational		
Frequency		13.56 MHz, ISO14443A Mifare Classic
Distance		2 cm
Environmental		
Operating Temperature		-10 ~ 60° C (14 ~ 140° F)
Operating Humidity		10 ~ 90% RH (non-condensing)
Mechanical		
LED Indicator		2 LED (power, status)
Connector		USB
Dimensions		65 x 100 x 24.7 mm (2.6" x 3.9" x 0.97")
Cable Length		160 cm (63")
Weight		115 g (0.25 lb)
Others		
Certification		CE, FCC

[Installation Guide](#)

Note: Specifications are subject to change without notice.

### Options

GV-AS ID Card & GV-AS ID Key Fob	GV-AS ID Cards and GV-AS ID Key Fobs are ideal for business and residential environment, where access control is important for security reasons. The 13.56 MHz cards and key fobs are available.
GV-AS ID F Card & GV-AS ID F Key Fob	

## GV-RU9003 UHF RFID Reader



GV-RU9003 is a Radio Frequency Identification (RFID) reader of ISO 18000-6C (EPC GEN2) standard. Designed for parking lot management, the reader can read RFID tag within 10 m (32.8 ft).

### KEY FEATURES

- Built-in antenna and RF module
- Effective identification with specially designed antenna pattern
- Compatible with access controller using Wiegand 64 interface
- Ideal sensing range within 10 m (32.8 ft)
- Special energy-saving design reducing power consumption
- Support for external sensors and controllers
- Electronic tag compliant with EPC Gen II (ISO 18000-6C) standard
- R&D patent for EMI reduction
- NCC/FCC/CE certification

### SPECIFICATIONS

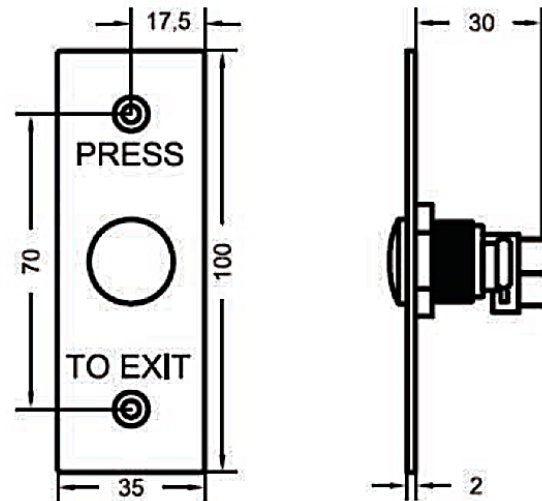
Input voltage	9 ~15 V
Antenna gain	7.71 dBi (circular polarization)
Antenna receiving	50 ohm U.FL.
Wiegand interface	Wiegand 64 bit
Operating frequency	RU9003 TW 922-928 MHz RU9003 US 902-928 MHz RU9003 EU 865-868 MHz
Emission power	27.9 dBm
Modulation scheme	PR-ASK, ASK
Current	<1A max.
Protocol	EPC Gen2 (ISO 18000-6C)
Receiving sensitivity	-85 dBm
Sensing range	10 m (32.8 ft) max.
Water resistance	IP56
Operating temperature	-20°C ~ 55 °C / -7.6°F ~ 131°F
Storage temperature	-20°C ~ 85°C / -7.6°F ~ 185°F
LEDs	Red, Green
Humidity	5-90 %
Dimensions	228 x 228 x 52.3 mm / 8.97 x 8.97 x 2.04 in
Weight	530 g / 1.16 lb
Certification	NCC, FCC, CE

## PB21 Push Button Switch

The PB21 is an American standard push button switch, designed with a stainless steel faceplate. It can be integrated with access control system, allowing door exit by momentarily activating or deactivating the electric locking device.

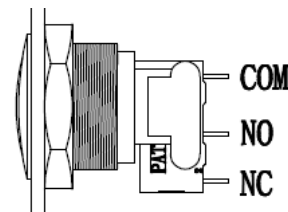
### Packing List

1. PB21 push button switch x 1
2. Phillips screw x 2
3. Wire clamp x 3
4. Wire protection tube x 3



### Contacts

1. To set a normally closed switch, connect the wires of access control system to the **COM** and **NC** pins of the push button switch.
2. To set a normally opened switch, connect the wires of access control system to the **COM** and **NO** pins of the push button switch.



### Specifications

Push Button Switch	Dry contact, 5A / AC 125V or 3A / AC 250V
--------------------	---

## GV-AS ID Card & GV-AS ID Tag



GV-AS ID Card is ideal for business environment where identity and access control is important for security reasons. And, GV-AS ID Tag, designed for easy carrying and key replacement, is ideal for residential application. All GV-AS ID Card and GV-AS ID Tag are fully compatible with GV-readers, offering great performance outcome.

- GV-AS ID 125kHz Card and GV-AS ID 125kHz Tag are fully compatible with GV-Reader 1251 (125kHz, Proximity)
- GV-AS ID ISO14443A Card and GV-AS ID ISO14443A Tag are fully compatible with GV-Reader 1352 (13.56MHz, Mifare)
- [Datasheet](#)

شرکت ایمن تصویر آوا

IMEN TASVIR AVA

سیستمهای ایمنی، نظارت و کنترل



آدرس : بزرگراه جلال آل احمد ( شرق به غرب )

بعد از پل آزمایش، نرسیده به چهار راه آریافر

ساختمان صنعت، پلاک ۲۷۹ واحد ۲



تلفن ویژه ایمن تصویر : ۰۲۱-۴۹۰۷۵



ارتباط با ما : ۰۹۱۹۱۹۱۹۵۷۲



آدرس سایت : [www.imentasvir.co](http://www.imentasvir.co)



ایمیل : [info@imentasvir.co](mailto:info@imentasvir.co)